

VERDANT HEALTH COMMISSION  
PUBLIC HOSPITAL DISTRICT NO. 2 OF SNOHOMISH COUNTY, WASHINGTON  
BOARD OF COMMISSIONERS  
Regular Meeting  
A G E N D A  
August 24, 2016  
8:00 a.m. to 9:45 a.m.

---

	<u>ACTION</u>	<u>TIME</u>	<u>PAGE</u>
A. Call to Order	---	8:00	---
B. Approval of the Minutes			
a) June 22, 2016 Board Meeting	Action	8:01	1-4
C. Executive Committee Report	Information	8:02	---
D. Superintendent search update – Ed Rogan/Waldron			
a) Search timing and status	Information	8:03	5-12
b) Compensation study update	Information	8:08	---
E. Finance Committee Report			
a) Financial statements and cash activity	Information	8:13	13-20
b) Authorization for payment of vouchers and payroll	Action	8:17	21
c) Kruger Clinic restroom remodel bid approval	Action	8:18	22-26
F. Swedish Program Change Request	Action	8:23	---
G. Program Committee Report & Recommendations			
a) Conflicts of Interest	---	8:38	---
b) Program Investment Recommendations	Action	8:39	27-36
c) Presentation from Community Health Center of Snohomish County	Information	8:54	---
d) Verdant Community Wellness Center activities update (written summary only)	Information	---	37-38
H. Marketing Report	Information	9:10	39
I. Superintendent's Report	Information	9:15	---
J. Public Comments (please limit to three minutes per speaker)	---	9:17	---
K. Commissioner Comments	---	9:25	---
L. Executive Session	Information	9:30	---
a) Consider the legal risks of a proposed action of the district			
M. Open Session	---	9:45	---
N. Adjournment	---	9:45	---

PUBLIC HOSPITAL DISTRICT NO. 2 OF SNOHOMISH COUNTY, WASHINGTON  
VERDANT HEALTH COMMISSION

***BOARD OF COMMISSIONERS***

***Regular Meeting***

***Verdant Community Wellness Center***

**June 22, 2016**

**Commissioners  
Present**

Fred Langer, President  
Deana Knutsen, Commissioner  
J. Bruce Williams, M.D., Commissioner  
Bob Knowles, Commissioner  
Karianna Wilson, Commissioner

**Others Present**

Carl Zapora, Superintendent  
George Kosovich, Assistant Superintendent &  
Program Director  
Jennifer Piplic, Marketing Director  
Lisa King, Finance Director  
Sandra Huber, Outreach Specialist  
Sue Waldin, Community Wellness Program Manager  
Karen Goto, Executive Assistant  
Members of the community

**Guests**

Dr. Hisham Ashkouri, ARCADD, Inc.  
Patrick Doherty, City of Edmonds

**Call to Order**

The Regular Meeting of the Board of Commissioners of Public Hospital District No. 2, Snohomish County, was called to order at 8:00 a.m. by President Langer.

**Approval of  
Minutes**

***Motion was made, seconded and passed unanimously to approve*** the minutes of the regular meeting on May 25, 2016.

***Motion was made, seconded and passed unanimously to approve*** the minutes of the special meeting on June 17, 2016.

**Executive  
Committee**

President Langer reported that the Executive Committee met on June 17, 2016 to review the June 22, 2016 board meeting agenda, and to meet with Waldron, the search firm for the Superintendent position as they build a candidate profile. President Langer requested that Commissioner Wilson connect with Waldron.

**Board Finance  
Committee**

The committee met on June 16, 2016. Ms. King reviewed the financial statements and cash activity for May 2016 (E:40:16). Warrant #11698 in the amount of \$17,062.64 to Moss Adams for the 2015 audit was called out. Ms. King noted two large deposits, one on May 10, 2016 in the amount of \$864,668.28 from Snohomish County for the levy and another on May 5, 2016 in the amount of \$183,190.00 from Washington State Health Care Authority for the final 2007 CPE settlement.

**Authorization  
for Payment of  
Vouchers &  
Payroll**

Warrant Numbers 11678 through 11715 for May 2016 for payment in the amount of \$66,480.04 were presented for approval (E:41:16). ***Motion was made, seconded and passed unanimously to approve.***

**Resolution  
2016:04  
Surplus Personal  
Property**

***Motion was made, seconded and passed unanimously to approve*** Resolution 2016:04 determining certain personal property to be surplus and no longer required for public hospital district purposes of the District.

**Program  
Oversight  
Committee  
Update**

The Program Committee met on June 15, 2016 to follow-up on two applications (E:42:16).

No conflicts of interest were reported by any of the commissioners present.

***Motion was made, seconded and passed unanimously to approve*** the Foundation for Edmonds School District's Nourishing Network Summer Meals Program in the amount of \$8,400 on a one-time basis to support a summer meals program for children in the Edmonds School District. Funds will be used to provide staff oversight over the activities, not for the actual meals, which will be provided by the YMCA. Commissioners requested a follow-up report on the program after its conclusion.

The other follow-up is for the Mercy Housing – Health in Housing program, a multi-year request at \$180,000 per year for three years. Commissioner Williams would like to see a possible partnership between this program and UW Bothell students in their health studies program. Commissioners discussed the health indicators that they would like to see measured through this program,

partnering with MCOs in the area, obtaining publishable results for future agency use. Commissioners request a study session with the various entities who will be involved (insurance companies, North Sound ACH, UW Bothell) to explore funding and partnerships.

Ms. Waldin presented an update on activities in the Verdant Community Wellness Center for April (E:43:16) and called out the Knee & Back Pain class with 42 participants on May 25, 2016, the Mediterranean Diet Learn & Taste Series with 86 participants held on June 6, 13, and 16, 2016, and the NAMI film on anxiety & depression held on June 17, 2016 with 20 participants. Summer programming will include the topic of mindfulness and a support group for LGBTQ youth.

**Marketing  
Report**

Ms. Piplic presented the Marketing report (E:44:16) highlighting the South County Walks this summer. There are a total of 40 walks throughout the summer and incentive prizes have been donated. Upcoming events include those where Verdant is a participant and/or a sponsor.

**Superintendent's  
Report**

Superintendent Zapora reported on three items:

1. At the recent WorkSource Center dedication in Lynnwood, Mayor Smith of the City of Lynnwood acknowledged Verdant's facilitation in keeping a Work Source center in south county.
2. Swedish Edmonds had a grand opening for the urgent care center on June 16, 2016. Ms. Sarah Zabel of Swedish Edmonds commented that services will begin ramping up at this new facility.
3. An article on Ms. Rowena Miller of the League of Women Voters is in the latest issue of the Senior Focus publication by Senior Services Snohomish County.

**Presentation by  
ARCADD, Inc. on  
Value Village  
property**

Dr. Hisham Ashkouri shared a presentation on a possible medical office building combined with a Starwood hotel on the Value Village property in Edmonds (E:45:16). President Langer thanked Dr. Ashkouri for the presentation and noted that the board was not taking any action today.

**Public  
Comments**

Ms. Sarah Zabel, VP of operations for Swedish Edmonds, updated the commissioners on hospital matters including the opening of the urgent care clinic, the upcoming medical imaging, short-stay unit, cath lab, and radiology lab buildings and that the hospital performed well in the latest regulatory licensing surveys.

**Commissioner  
Comments**

Commissioner Williams commented that the quality control surveyors were impressed with Swedish Edmonds' organization and quality control efforts.

**Adjourn**

There being no further business to discuss, the meeting was adjourned at 9:15 a.m.

**ATTEST BY:**

---

President

---

Secretary



Superintendent/CEO

Lynnwood, WA

Search conducted by:





# The Organization

The mission of the Verdant Health Commission is to improve overall health and well-being in South Snohomish County, with the vision of making it Washington State's healthiest community.

Verdant provides community health and wellness programs and funding in partnership with local organizations. A convener, facilitator, and advocate, Verdant empowers people to access the care and tools they need to lead healthy lives. Verdant promotes and supports this by partnering with local organizations and service providers, providing one-time and ongoing program investments, and organizing and facilitating programs.

As a public hospital district, the Health Commission previously directly managed Stevens Hospital. In 2010, the hospital - the District's single most valuable asset and revenue generator - was leased to Swedish Health Services, and the commission turned their focus to improving access to health and wellness services in the community. In the last six years, the commission has successfully rebranded and repositioned itself to be a leader in community health and wellness. Effectively a new organization, the Verdant Health Commission has established policies, program areas, procedures, infrastructure, and its new identity in South Snohomish County.

Verdant is directed by a board of five publicly elected commissioners, who serve staggered six year terms. Including the Superintendent/CEO, a dedicated staff of seven manages operations and a multitude of programs from the Community Wellness Center in Lynnwood. The Commission invests approximately \$6M annually in a variety of programs serving the community of South Snohomish County, which includes the 200,000 residents of Brier, Edmonds, Lynnwood, Mountlake Terrace, Woodway, parts of Bothell, and unincorporated Snohomish County. The district is demographically and socio-economically diverse, with a wide range of health needs and barriers to health care access including language, cost, and lack of information.

Verdant's new Community Wellness Center serves as a gateway to information, programs, and services. This is the only center of its kind in the state, offering tools and programs built around the categories of Eat Better, Get Active, Stay Well, and Stress Less. A full calendar of free or low-cost programs offers opportunities for learning and engagement for all ages, such as:

- Play and Learn for birth to five-year-olds at the Community Wellness Center
- Dance for Parkinson's, a program of the Northwest Parkinson's Foundation
- Lifestyle check-ins, which include access to a nutritionist and Exercise Physiologist
- Cooking demonstrations at the Center's kitchen
- Walking and biking groups
- Partnering with community organizations to reach underserved groups

Verdant anticipates total revenues for 2016 of approximately \$11.9M with operating expenses of approximately \$2.5M. Program expenses are forecast at \$7.7M with nearly \$6M of that money going to investments throughout the community.

Learn more about Verdant, their programs, and the community at <http://verdanthealth.org/>.





## The Position

Reporting to the elected Board of Commissioners, the Superintendent/CEO ensures that the District is fulfilling its mission to improve the health status of the community by leading the organization in providing exciting, inclusive health and wellness opportunities across South Snohomish County. As the organization seeks to increase the ways in which it can positively influence and affect the health of the community, the superintendent will take a lead role in creative partnership building as well as drive and vision for programming. The Superintendent/CEO works with the Board to provide positive, effective leadership and increase program visibility within the community.

The Superintendent/CEO will share the public face of the organization with the Commissioners, strategically positioning them for effective messaging and communication with the community. He or she also monitors trends, changes, mergers, acquisitions, and emerging issues throughout the state of Washington as related to hospital operations, health care services, and community health. Taking a multi-institutional approach, he or she administers the contract with Swedish Health Services/ Providence, and ensures the hospital and other real estate assets of the District are being maintained.







## Ideal Candidate

The Commissioners seek a creative, innovative, visionary leader with a demonstrated passion for helping people lead healthier lives. The preferred candidate will possess exemplary communication skills, be a persuasive, dynamic presenter and speaker, and understand how effective messaging can influence attitudes and behavior relative to health and wellness. He or she must be comfortable serving in a highly visible role in the community.

Focused on both the big picture as well as the details, the successful candidate will have a history of not just generating novel ideas and programs, but also seeing them through to successful implementation. He or she possesses the ability to recognize new connections and partnerships that may benefit the organization and the community, and then proactively establish and foster those relationships. The Board seeks a flexible, diplomatic, collaborative individual who will continue the work of convening area leaders to identify community-wide health related needs and developing programs to address them.

Verdant is a public entity subject to the requirements of the Open Public Meetings Act. As such, the ideal candidate will possess significant experience either working in a similar public agency with an elected board, or for a high level Board of Directors or Trustees. He or she must be honest and transparent with public information, and demonstrate integrity and ethical standards beyond reproach at all times. Additionally, he or she must be able to react quickly and accurately to unanticipated, emerging situations.

Internally, it is vital for the new Superintendent/CEO to be an effective team builder and mentor for staff, as well as a savvy, knowledgeable, and responsible steward of public funds. She or he should also embrace and foster an engaging, enjoyable, fun work environment. The Board seeks a partner in leading the Commission who has the instincts to know when to take the reins and the humility to know when to facilitate the leadership and decision making of the Commissioners. The preferred candidate will possess broad business acumen and senior executive level skills, including budgeting and financial management, outreach and advocacy, strategic planning, staff management, Board relations, partner and contract negotiations, and marketing.





## Key Priorities

The new Superintendent/CEO will need to spend time at the outset forming relationships with key stakeholders: Verdant staff, the Board of Commissioners, current program and community partners, leaders at Swedish Edmonds/Providence, and civic leaders throughout Verdant's service area. In addition, he or she must become very familiar with and expertly conversant in Verdant's hospital lease obligations, operating and reporting requirements dictated by the Open Public Meetings Act, and other compliance issues.

Verdant is one of only a handful of organizations in the U.S. focused on the field of population and community health, and as such presents an exciting opportunity for growth and creativity. While a strong foundation has been established, the new Superintendent/CEO will have the opportunity to contribute to the long-term strategy as well as analyze and develop new ideas and direction for the future. The Superintendent/CEO will take the lead on developing impactful partnerships and offerings that demonstrate Verdant's commitment to the health and wellness of the community.

### Community Needs Assessment

The new Superintendent/CEO will lead Verdant's next community needs assessment and guide the organization in determining where the community is growing and going by conducting research, locating and analyzing existing data sources, identifying gaps in services and resources, and working with other community leaders to design and implement programs to address these needs. He or she will also lead the process of putting appropriate metrics in place to measure, track, and report on Verdant's effectiveness.



# Key Priorities - Continued

## Community Program Investments

To date, Verdant has primarily funded organizations and programs through a relatively traditional community program investment process. The organization's current three-year strategic plan lays out several broad goals for the organization that will impact how program investments and development look in the future. The new Superintendent/CEO will have the opportunity to shape this work by incubating new programs in-house and spinning them off, taking a proactive approach to identifying and approaching organizations about investment opportunities, or shifting to developing and housing programs long-term.

## Annual Conference

In February of 2016, Verdant held its first Healthier Community Conference, which offered sessions on personal, family, and workplace health. The event sold out to over 300 community members, and is planned to be repeated in early 2017. The new Superintendent/CEO will be joining the organization as planning for next year's event begins to accelerate and final decisions are being made.

## Mental Health Services

Snohomish County continues to see increased need for mental health and behavioral health services and currently the demand levels exceed the capacity of providers. The new Superintendent/CEO will work with other community and health care leaders to find ways to address this issue and increase service capacity.

## Real Estate Holdings

In addition to the hospital campus, the District's most important real estate asset, Verdant owns and manages several other income producing properties. The new Superintendent/CEO will evaluate use and potential redevelopment of properties in the coming years to align more closely with Verdant's mission, providing new resources for the community, and enhancing Verdant's visibility and presence in the community. In addition, the Superintendent/CEO will be responsible for proactively identifying new strategic real estate investments that enhance the District's portfolio and provide a benefit to the community, as well as monitoring and evaluating emerging or unexpected opportunities to acquire and develop property.

# Qualifications

Candidates should possess ten (10) or more years of senior leadership/executive leadership experience, ideally within a community health or health care setting. This should include leading an organization, department, or division of significant size and scope. The preferred candidate will possess demonstrated professional experience and success across sectors (public, private, non-profit, philanthropy), as well as significant experience reporting to, working closely with, or serving in a key leadership role on a Board of Directors, Trustees, or Commissioners. Experience working directly for or closely with elected officials is highly desirable.

A Bachelor's Degree in public health, health care administration, business, finance, public administration, or a related field is required. An advanced degree such as an MBA, MPA, MPH, MD, JD, MNPL, MSN, or PHD in a related field would be advantageous.







## To Be Considered

All qualified candidates are encouraged to apply. To be considered, please go to <http://candidateportal.waldronhr.com> to submit a resume and cover letter expressing your passion for the mission and fit for the role. Cover letters can be addressed to Ed Rogan. Materials will not be accepted at or by Verdant. All phone calls should also be directed to Waldron.

Verdant's search for a new Superintendent is being supported by a team from Waldron:

### **Ed Rogan**

*Senior Consultant*

Direct: 206.697.8428

[erogan@waldronhr.com](mailto:erogan@waldronhr.com)

### **Lauren Pederson**

*Senior Associate*

Direct: 206.462.6192

[lauren@waldronhr.com](mailto:lauren@waldronhr.com)







Waldron is honored to work with Verdant Health Commission in the search for a Superintendent. We believe in and support the work of Verdant Health Commission and we are doing our best to recruit a talented leader who will accelerate this mission. As the consulting partner strategic leaders choose to help attract, engage, and inspire effective leaders, Waldron provides a unique combination of executive search, leadership development, and career transition services across sectors and industries. Our passion is helping people and organizations realize their full potential and increase their impact.

**Balance Sheet**

As of July 31, 2016

	A	B	C	D
	Dec 31, 2015	Jul 31, 2016	\$ Change	Comments:
<b>1 ASSETS</b>				
<b>2 Current Assets</b>				
<b>3 Cash Balance</b>	2,928,196	1,924,245	(1,003,951)	
<b>4 Other Current Assets</b>	34,623,348	37,889,854	3,266,506	Includes Investments
<b>5 Total Current Assets</b>	37,551,544	39,814,099	2,262,554	
<b>6 Total Long-term &amp; Fixed Assets</b>	46,897,663	45,377,164	(1,520,499)	Includes Depreciation
<b>7 TOTAL ASSETS</b>	<b>84,449,208</b>	<b>85,191,263</b>	<b>742,055</b>	
<b>8 LIABILITIES &amp; EQUITY</b>				
<b>9 Liabilities</b>				
<b>10 Current Liabilities</b>	2,839,365	2,077,027	(762,337)	Includes BHCF
<b>11 Long-term Liabilities</b>	4,614,978	3,953,794	(661,184)	2012 LTGO Bonds/BHCF
<b>12 Total Liabilities</b>	7,454,343	6,030,822	(1,423,521)	
<b>13 Total Equity</b>	76,994,864	79,160,441	<b>2,165,576</b>	Annual Net Income
<b>14 TOTAL LIABILITIES &amp; EQUITY</b>	<b>84,449,208</b>	<b>85,191,263</b>	<b>742,055</b>	

**Profit & Loss**

July 2016

	A	B	C	D	E	F
	Jul Actual	Jul Budget	Fav/(Unfav)	YTD Actual	YTD Budget	Fav/(Unfav)
<b>1 INCOME</b>						
<b>2 Ordinary Income</b>	827,203	827,344	(141)	5,850,276	5,870,474	(20,197)
<b>3 EXPENSES</b>						
<b>4 Operating Expenses</b>	158,162	206,845	48,682	1,194,785	1,394,757	199,972
<b>5 Depreciation Expense</b>	198,605	201,369	2,764	1,434,200	1,448,716	14,516
<b>6 Program Expenses</b>	439,968	525,000	85,032	2,989,096	4,331,000	1,341,904
<b>7 Total Expenses</b>	796,735	933,214	136,479	5,618,081	7,174,473	1,556,392
<b>8 OTHER INCOME/(EXPENSE)</b>						
<b>9 Total Other Income/(Expense)</b>	250,092	226,468	23,624	1,933,381	1,585,273	348,108
<b>10 NET INCOME</b>	<b>280,560</b>	<b>120,597</b>	<b>159,963</b>	<b>2,165,576</b>	<b>281,274</b>	<b>1,884,303</b>

**Monthly Highlights**

June &amp; July 2016

Verdant received dividends payments of \$110,918 and an unrealized gain of \$131,359 on our investment portfolio in June and July and closed with an ending market value of \$37,132,202.

Annual program commitments total \$6,352,564 and \$3,780,015 for 2016 and 2017, respectively. \$1,347,436 remains available to spend in 2016, of which \$38,087 is earmarked as Superintendent Discretionary.

Additional income of \$204,739 and expenses of \$168,500 from the Kruger Clinic were incurred, netting to an additional operating income of \$36,239 in June and July.

**Public Hospital District #2**

Warrant Number	Transaction Date	Payee	Amount	Purpose
<b>Warrant Activity:</b>				
11718	06/01/2016	EPromos	596.57	Verdant Aprons, Grocery Bags, Table Clothes
11719	06/01/2016	Guardian Security Systems	240.00	7/1/2016-9/30/16 Elevator and AES Radio Monitoring
11720	06/01/2016	Puget Sound Energy	53.11	Natural Gas
11721	06/01/2016	Regence Blueshield	4,843.43	June 2016 Health Insurance
11722	06/01/2016	Waste Management	91.26	May 2016
11723	06/01/2016	Waste Management	165.40	May 2016
11724	06/01/2016	Corporate Security LLC	284.00	June 2016 Parking Lot Security
11725	06/01/2016	Jason Becker Creative	300.00	Development of Verdant Logo for "South County Walks"
11726	06/08/2016	Comcast	521.47	Internet/phone
11727	06/08/2016	Dataworks	1,021.16	IT Support
11728	06/08/2016	Comcast	272.09	Internet/phone
11729	06/08/2016	R&T Hood and Duct Services, Inc.	178.27	Semi-annual hood inspection
11730	06/08/2016	Sound Publishing, Inc.	39.20	Legal Notice 5/25 Board Meeting
11737	06/15/2016	Snohomish County.	5,050.00	Award 236 - Medical Reserve Corps Training Program
11731	06/08/2016	Ash Consulting	1,050.50	May 2016 Accounting Consulting
11732	06/09/2016	City of Lynnwood	1,210.63	May 2016 After Hours Support (82.5 hrs)
11733	06/09/2016	Sound Dietitians	480.00	WC 129 - Lifestyle Change Check-in session 5/2,5/17 Cooking Classes 5/4
11734	06/09/2016	Cedar Way PTO	300.00	Superintendent Discretionary - Sponsor of 5k
11735	06/09/2016	Lowe Graham Jones PLLC	2,421.00	May 2016 trademark monitoring & follow-up on trademark infringement
11736	06/09/2016	Armstrong Services	1,209.48	May 2016 Janitorial
11738	06/15/2016	Electronic Business Machines	1,328.53	3/1/16 - 5/31/16 Copy Machine
11739	06/15/2016	Healthcare Realty	9,127.46	Property Management
11740	06/15/2016	McKinstry Co., LLC	540.22	May 2016 HVAC Repairs at VCWC
11741	06/15/2016	Waldron	18,700.00	Payment 1 of 3 Superintendent Search
11742	06/15/2016	YWCA of Seattle, King and Snohomish Co	8,911.00	WC 128 - Lifeskills Classes
11743	06/22/2016	Staples	64.84	Supplies
11744	06/22/2016	AmeriFlex Business Solutions	23.00	June 2016 FSA Administration
11745	06/22/2016	Foster Pepper PLLC	15,180.00	Legal Fees January 2016
11746	06/22/2016	Principal	1,079.31	EE Life Insurance
11747	06/22/2016	Regence Blueshield	4,843.43	July 2016 Health Insurance
11748	06/22/2016	Sound Publishing, Inc.	39.20	6/22 Board Meeting Legal Notice
11749	06/22/2016	Dataworks	105.00	IT Support
11750	06/22/2016	Total Health	956.98	WC 134 - Instructor Reimbursement 6/9, 6/13, 6/16 Classes
11751	06/29/2016	Eberle Vivian	4,037.70	3Q16 Self Insurance Work Comp Claims Administration
11752	06/29/2016	Snohomish County PUD	898.22	VCWC Electricity
11753	06/29/2016	Wells Fargo	2,185.14	Misc.
11754	06/29/2016	Consolidated Landscape Maintenance, Inc.	2,355.76	July 2016 Landscaping
11755	06/29/2016	Dimensional Communication, Inc	395.57	Repair to AV system
11756	06/29/2016	Economic Alliance Snohomish County	395.00	Membership Dues
11757	06/29/2016	Puget Sound Energy	53.20	Natural Gas
11758	06/29/2016	Waste Management	227.69	Garbage/Recycle VCWC
11759	06/29/2016	Parsi Properties LLC	2,500.00	July 2016 - Parking lot lease
Total Warrants			94,274.82	

Warrant Number	Transaction Date	Payee	Amount	Purpose
<b>Wire/ACH Activity:</b>				
	6/10/2016	Payroll	18,562.11	ACH payroll transfer
	6/10/2016	Department of Treasury	8,388.97	Payroll taxes for 6/4/16 pay period ending
	6/10/2016	Valic	3,108.38	Payroll 401(a)/457 Deposit
	6/10/2016	Paychex	100.18	Fee for payroll processing
	6/24/2016	Payroll	18,081.47	ACH payroll transfer
	6/24/2016	Department of Treasury	7,963.03	Payroll taxes for 6/18/16 pay period ending
	6/24/2016	Valic	2,970.97	Payroll 401(a)/457 Deposit
	6/24/2016	Paychex	102.47	Fee for payroll processing
	6/24/2016	Paychex	79.80	Fee to reprocess Dr. William's check
	6/24/2016	Department of Treasury	20.20	Payroll taxes for 6/18/16 pay period ending Dr. Williams
	6/10/2016	Wells Fargo Merchant Services	70.00	Merchant Services
	6/15/2016	Alpha Supported Living Services	5,416.67	Program Payment
	6/15/2016	Alzheimer's Association Western & Central	7,209.16	Program Payment
	6/15/2016	American Diabetes Association	6,250.00	Program Payment
	6/15/2016	Boys & Girls Club of Snohomish County	12,833.33	Program Payment
	6/15/2016	CampFire	4,166.67	Program Payment
	6/15/2016	Cascade Bicycle Club Education Foundation	2,666.67	Program Payment
	6/15/2016	Center for Human Services	13,750.00	Program Payment
	6/15/2016	ChildStrive	23,333.33	Program Payment
	6/15/2016	City of Lynnwood	6,144.08	Program Payment
	6/15/2016	Community Health Center of Snohomish Co	27,083.33	Program Payment
	6/15/2016	Compass Health	33,000.00	Program Payment
	6/15/2016	Domestic Violence Services Snohomish Co	1,855.50	Program Payment
	6/15/2016	Edmonds Community College	4,974.50	Program Payment
	6/15/2016	Edmonds Community College Foundation	4,396.33	Program Payment
	6/15/2016	Edmonds School District No. 15	68,533.25	Program Payment
	6/15/2016	Edmonds Senior Center	9,166.67	Program Payment
	6/15/2016	Kinderling	7,500.00	Program Payment
	6/15/2016	Korean Women's Association	5,000.00	Program Payment
	6/15/2016	Lutheran Community Services NW	7,837.58	Program Payment
	6/15/2016	Medical Teams International	5,500.00	Program Payment
	6/15/2016	PEPS	2,987.50	Program Payment
	6/15/2016	Project Access Northwest	7,500.00	Program Payment
	6/15/2016	Puget Sound Christian Clinic	25,911.11	Program Payment
	6/15/2016	Puget Sound Kidney Centers Foundation	4,166.67	Program Payment
	6/15/2016	Senior Services of Snohomish County	57,936.67	Program Payment
	6/15/2016	Snohomish County Fire District 1	28,666.67	Program Payment
	6/15/2016	Snohomish County Music Project	2,416.67	Program Payment
	6/15/2016	Therapeutic Health Services	16,666.67	Program Payment
	6/15/2016	Volunteers of America Western WA	6,362.92	Program Payment
	6/15/2016	Wonderland Development Center	11,250.00	Program Payment
	6/15/2016	YWCA of Seattle, King and Snohomish Co	8,333.33	Program Payment
	6/15/2016	Mary Porter, RDN	1,305.00	Program Payment



Warrant Number	Transaction Date	Payee	Amount	Purpose
<b>Wire/ACH Activity:</b>				
	6/15/2016	American Red Cross	5,000.00	Program Payment
	6/15/2016	Go the Second Mile	12,000.00	Program Payment
	6/15/2016	City of Edmonds Parks & Recreation	120.00	Program Payment
	6/15/2016	City of Mountlake Terrace	3,640.00	Program Payment
	6/15/2016	Seattle Visiting Nurse Association	8,914.00	Program Payment
	6/2/2016	AmeriFlex Business Solutions	354.98	FSA Payments
	6/3/2016	AmeriFlex Business Solutions	5.00	FSA Payments
	6/6/2016	AmeriFlex Business Solutions	30.00	FSA Payments
	6/9/2016	AmeriFlex Business Solutions	137.15	FSA Payments
	6/13/2016	AmeriFlex Business Solutions	238.46	FSA Payments
	6/16/2016	AmeriFlex Business Solutions	30.00	FSA Payments
	6/20/2016	AmeriFlex Business Solutions	30.00	FSA Payments
	6/27/2016	AmeriFlex Business Solutions	223.46	FSA Payments
	6/28/2016	AmeriFlex Business Solutions	10.00	FSA Payments
	6/29/2016	AmeriFlex Business Solutions	55.61	FSA Payments
	6/24/2016	WA Department of Revenue	785.70	B&O tax
Wire	6/1/2016	US Bank	65,850.00	Bond Interest Payment
		Total Wires/ACH Transactions	<u>586,992.22</u>	
<b>Kruger Clinic Activity:</b>				
534-553	Jun 2016	Various Claimants/Vendors	<u>52,137.00</u>	Administered by Healthcare Realty
<b>Workers Compensation Claims Activity:</b>				
305311-316	Jun 2016	Various Claimants/Vendors	<u>4,535.32</u>	Administered by Eberle Vivian
		<b>Total Disbursements</b>	<u><b>\$ 737,939.36</b></u>	

	Transaction Date	Payer	Amount	Purpose
Deposits:				
	6/1/2016	Swedish/Edmonds	746,384.60	Monthly leases
	6/1/2016	Value Village	25,490.56	Monthly lease
	6/2/2016	Brian Takagi, MD	84.63	Kruger Clinic monthly lease
	6/2/2016	Raymond Liu, D.D.S.	3,487.73	Kruger Clinic monthly lease
	6/2/2016	Puget Sound Gastro	27,647.12	Kruger Clinic monthly lease
	6/20/2016	Kean Lawlor	19,729.46	Kruger Clinic monthly lease
	6/10/2016	Snohomish County	168,021.34	Levy
	6/20/2016	City of Brier	278.00	Refund for unused program grant
	6/27/2016	Healthcare Realty Services, Inc.	4,663.72	Monthly ground lease
	6/2/2016	Felicia Seubert	100.00	Deposit for VCWC
	6/21/2016	Puget Sound Gastro	602.59	Kruger Clinic billback
	6/25/2016	Raymond Liu, D.D.S.	3,487.73	Kruger Clinic monthly lease July
		<b>Total Deposits</b>	<b>\$ 999,977.48</b>	

**Public Hospital District #2**

<b>Warrant Number</b>	<b>Transaction Date</b>	<b>Payee</b>	<b>Amount</b>	<b>Purpose</b>
<b>Warrant Activity:</b>				
11760	07/06/2016	UNITED WAY	714.00	EE Contributions
11761	07/06/2016	Armstrong Services	1,668.81	June 2016 Janitorial
11762	07/06/2016	Ash Consulting	1,337.00	Accounting Consulting
11763	07/06/2016	Comcast	272.09	Telephone/Internet
11764	07/06/2016	Corporate Security LLC	284.00	July 2016 Parking Lot Security
11765	07/06/2016	Thomas & Associates	9,546.90	Feb-Jun 2016 Consulting Fees
11766	07/06/2016	ThyssenKrupp Elevator Company	807.17	3rd Qtr Elevator Maintenance Contract
11767	07/06/2016	Waldron	3,000.00	Payment 1 of 2 Superintendent Salary
11768	07/13/2016	WA Department of Revenue	21,826.43	Q2 2016 Leasehold Excise tax return
11769	07/13/2016	I Know CPR, Inc.	512.00	WC 139 - Instructor Reimbursement for CPR Classe 6/18
11770	07/13/2016	Sea-Mar CHC	1,080.00	WC 131 - Instructor Reimbursement Cooking Matters Curriculum and Class
11771	07/13/2016	Seattle Food Nut	577.41	WC 120 - Instructor Reimbursement Teen Cooking Class 6/29/16; food
11772	07/13/2016	Sound Dietitians	1,449.64	WC 129 - Instructor Reimbursement Lifestyle Change Check-in & Cooking Class
11773	07/13/2016	City of Lynnwood - Utilities	683.61	Water/Sewer
11774	07/13/2016	WA Department of Revenue	3,269.00	Audit 2012-2015 Leasehold Excise Tax
11775	07/13/2016	City of Lynnwood	1,247.38	Jun 2016 After Hours Support (85.5 hrs)
11776	07/13/2016	AmeriFlex Business Solutions	23.00	July 2016 FSA Administration
11777	07/13/2016	Comcast	521.52	Telephone/Internet
11778	07/13/2016	Healthcare Realty	8,691.57	Property Management
11779	07/13/2016	Lowe Graham Jones PLLC	177.00	Jun 2016 trademark monitoring
11780	07/20/2016	Impact Physical Therapy	150.00	WC 137 Staying Active with Knee and Back Pain
11781	07/20/2016	Moss Adams - Audit	12,173.55	2015 Financial Audit
11782	07/20/2016	Speedy Sign Center_1	384.30	Graphics for VCWC Cedar Room
11783	07/20/2016	Dataworks	245.00	IT Support
11784	07/20/2016	Costco	55.00	SW & LK Membership Dues
11785	07/20/2016	Objekts	2,655.61	Deposit for furniture order for VCWC
11786	07/20/2016	Staples	61.48	Supplies
11787	07/20/2016	Aukema & Associates	94.00	June 2016 Website updates
11795	07/27/2016	Wells Fargo	3,524.55	Misc.
11788	07/27/2016	Department of Labor and Industries	877.79	2Q16 Self Insurance Fund
11789	07/27/2016	Parsi Properties LLC	2,500.00	Aug 2016 - Parking lot lease
11790	07/27/2016	Principal	1,108.17	EE Life Insurance
11791	07/27/2016	Regence Blueshield	4,843.43	Aug 2016 EE Health Insurance
11792	07/27/2016	The StayWell Company, LLC	3,000.00	Qtr Payment for health content on website & publication
11793	07/27/2016	Wells Fargo	724.17	Misc.
11794	07/27/2016	Quad Pictures	186.88	Aerial Image of Hospital
		Total Warrants	<u>90,272.46</u>	

**Kruger Clinic Activity:**

554-579	Jul 2016	Various Claimants/Vendors	<u>37,476.98</u>	Administered by Healthcare Realty
---------	----------	---------------------------	------------------	-----------------------------------

**Workers Compensation Claims Activity:**

305317-322	Jul 2016	Various Claimants/Vendors	<u>4,898.46</u>	Administered by Eberle Vivian
------------	----------	---------------------------	-----------------	-------------------------------

Warrant Number	Transaction Date	Payee	Amount	Purpose
<b>Wire/ACH Activity:</b>				
	7/8/2016	Payroll	18,721.27	ACH payroll transfer
	7/8/2016	Department of Treasury	7,968.67	Payroll taxes for 7/2/16 pay period ending
	7/8/2016	Valic	3,040.92	Payroll 401(a)/457 Deposit
	7/8/2016	Paychex	123.97	Fee for payroll processing
	7/22/2016	Payroll	18,331.22	ACH payroll transfer
	7/22/2016	Department of Treasury	6,755.42	Payroll taxes for 7/16/16 pay period ending
	7/22/2016	Valic	2,990.72	Payroll 401(a)/457 Deposit
	7/22/2016	Paychex	94.32	Fee for payroll processing
	7/10/2016	Wells Fargo Merchant Services	73.30	Merchant Services
	7/15/2016	Alpha Supported Living Services	5,416.67	Program Payment
	7/15/2016	Alzheimer's Association Western & Central	7,209.16	Program Payment
	7/15/2016	American Red Cross	2,500.00	Program Payment
	7/15/2016	Boys & Girls Club of Snohomish County	12,833.33	Program Payment
	7/15/2016	CampFire	4,166.67	Program Payment
	7/15/2016	Cascade Bicycle Club Education Foundation	2,666.67	Program Payment
	7/15/2016	Center for Human Services	13,750.00	Program Payment
	7/15/2016	ChildStrive	23,333.33	Program Payment
	7/15/2016	City of Lynnwood	6,144.08	Program Payment
	7/15/2016	Community Health Center of Snohomish Co	52,421.25	Program Payment
	7/15/2016	Compass Health	18,572.50	Program Payment
	7/15/2016	Domestic Violence Services Snohomish Co	1,855.50	Program Payment
	7/15/2016	Edmonds Community College Foundation	4,396.33	Program Payment
	7/15/2016	Edmonds School District No. 15	68,533.25	Program Payment
	7/15/2016	Edmonds Senior Center	9,166.67	Program Payment
	7/15/2016	Foundation for Edmonds School District	8,400.00	Program Payment
	7/15/2016	Kinderling	7,500.00	Program Payment
	7/15/2016	Korean Women's Association	5,000.00	Program Payment
	7/15/2016	Latino Educational Training Institute	5,000.00	Program Payment
	7/15/2016	Lutheran Community Services NW	7,837.58	Program Payment
	7/15/2016	Mary Porter, RDN	750.00	Program Payment
	7/15/2016	Medical Teams International	5,500.00	Program Payment
	7/15/2016	PEPS	2,987.50	Program Payment
	7/15/2016	Project Access Northwest	7,500.00	Program Payment
	7/15/2016	Puget Sound Christian Clinic	25,911.11	Program Payment
	7/15/2016	Puget Sound Kidney Centers Foundation	4,166.67	Program Payment
	7/15/2016	Senior Services of Snohomish County	57,936.67	Program Payment
	7/15/2016	Snohomish County Fire District 1	28,666.67	Program Payment
	7/15/2016	Snohomish County Music Project	2,416.67	Program Payment
	7/15/2016	Therapeutic Health Services	16,666.67	Program Payment
	7/15/2016	Volunteers of America Western WA	6,362.92	Program Payment
	7/15/2016	Wonderland Development Center	11,250.00	Program Payment
	7/15/2016	YWCA of Seattle, King and Snohomish Co	2,083.33	Program Payment



Warrant Number	Transaction Date	Payee	Amount	Purpose
<b>Wire/ACH Activity:</b>				
	7/5/2016	AmeriFlex Business Solutions	15.00	FSA Payments
	7/8/2016	AmeriFlex Business Solutions	307.60	FSA Payments
	7/12/2016	AmeriFlex Business Solutions	10.00	FSA Payments
	7/15/2016	AmeriFlex Business Solutions	15.00	FSA Payments
	7/21/2016	AmeriFlex Business Solutions	15.00	FSA Payments
	7/25/2016	AmeriFlex Business Solutions	193.46	FSA Payments
	7/29/2016	AmeriFlex Business Solutions	15.00	FSA Payments
	7/25/2016	AmeriFlex Business Solutions	15.00	FSA Payments
	7/27/2016	AmeriFlex Business Solutions	12.58	FSA Payments
	7/12/2016	AmeriFlex Business Solutions	193.46	FSA Payments
	7/6/2016	AmeriFlex Business Solutions	15.00	FSA Payments
	7/27/2016	WA Department of Revenue	784.71	B&O tax
	7/20/2016	Department of Labor and Industries	486.85	2Q16 L&I - State Fund
		Total Wires/ACH Transactions	499,079.67	
		<b>Total Disbursements</b>	<b>\$ 631,727.57</b>	

	Transaction Date	Payer	Amount	Purpose
<b>Deposits:</b>				
	7/1/2016	Swedish/Edmonds	746,384.60	Monthly leases
	7/1/2016	Value Village	25,490.56	Monthly lease
	7/1/2016	Brian Takagi, MD	84.63	Kruger Clinic monthly lease
	7/1/2016	Puget Sound Gastro	27,647.12	Kruger Clinic monthly lease
	7/1/2016	Kean Lawlor	19,729.94	Kruger Clinic monthly lease
	7/1/2016	Kean Lawlor	164.70	Billback
	7/5/2016	Enduris Insurance Recovery	51,593.89	Insurance Recovery for KC 2/15 Flood Claim
	7/8/2016	Swedish/Edmonds	502.83	Refund for unused program grant
	7/10/2016	Snohomish County	9,806.89	Levy
	7/25/2016	Healthcare Realty Services, Inc.	4,663.72	Monthly ground lease
		<b>Total Deposits</b>	<b>\$ 886,068.88</b>	

VERDANT HEALTH COMMISSION  
PUBLIC HOSPITAL DISTRICT #2  
SNOHOMISH COUNTY, WASHINGTON

WARRANT APPROVAL

We, the undersigned Board of Commissioners of Public Hospital District #2 of Snohomish County, Washington, do hereby certify that the merchandise or services hereinafter specified have been received and that Warrant Numbers 11718 through 11794 have been issued for payment in the amount of \$184,547.28. These warrants are hereby approved.

Attest:

\_\_\_\_\_  
Lisa M. King

\_\_\_\_\_  
Commissioner

\_\_\_\_\_  
Commissioner

\_\_\_\_\_  
Commissioner

\_\_\_\_\_  
Commissioner

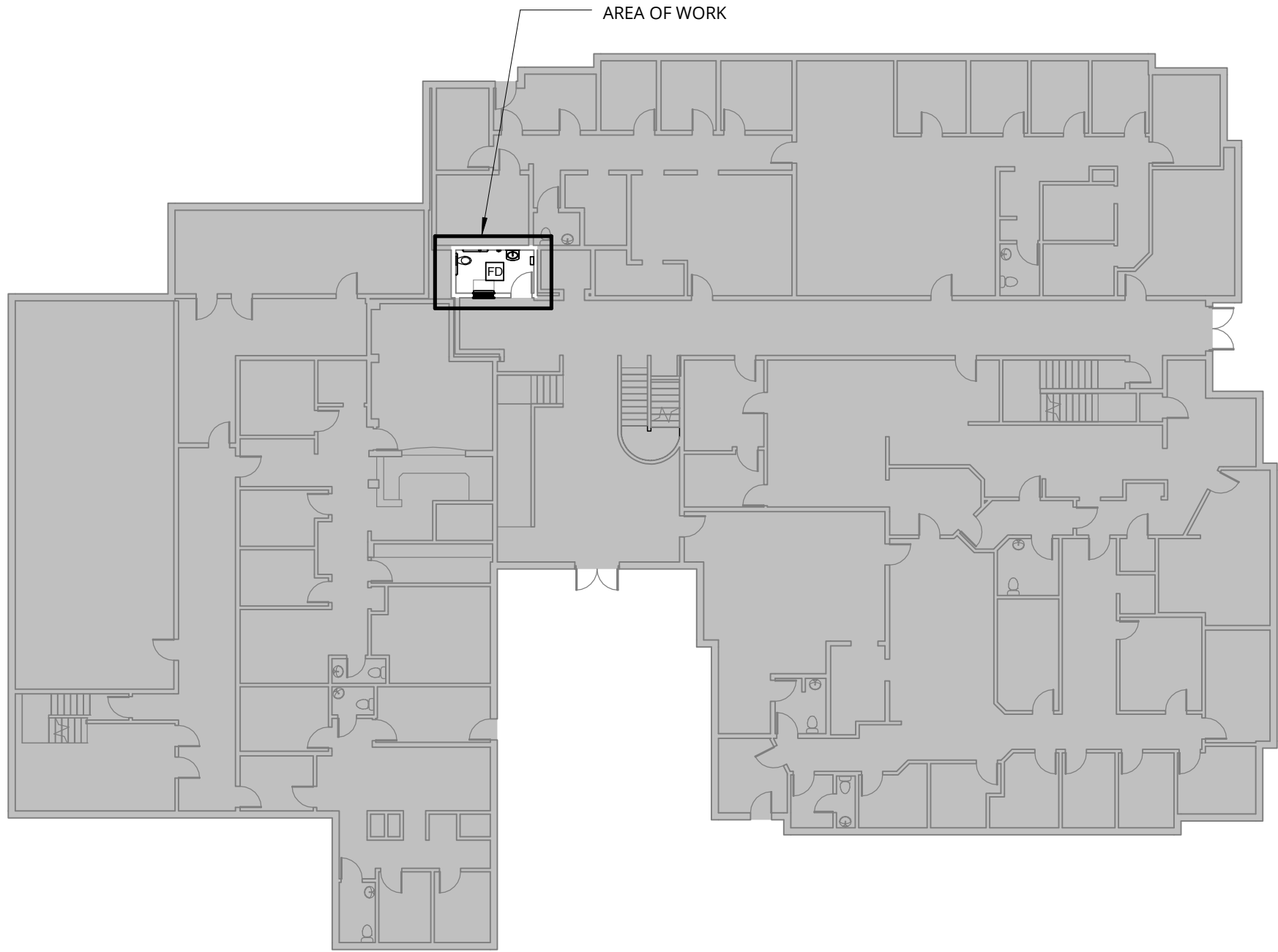
\_\_\_\_\_  
Commissioner

-----			
Warrants Processed:	6-1-16 – 7-31-16		\$184,547.28
Work Comp Claims Pd:	6-1-16 – 7-31-16		9,433.78
Kruger Clinic Processed:	6-1-16 – 7-31-16		89,613.98
Payroll:	5-22-16 – 6-4-16	18,562.11	
	6-5-16 – 6-18-16	18,081.47	
	6-19-16 – 7-2-16	18,721.27	
	7-3-16 – 7-16-16	<u>18,331.22</u>	
			73,696.07
Electronic Payments:	Payroll Taxes	31,096.29	
	Paychex	500.74	
	Valic Retirement	12,110.99	
	AmeriFlex FSA	1,921.76	
	Bank Fees	143.30	
	WA State Dept Revenue	1,570.41	
	Dept of L&I	486.85	
	US Bank Bond Interest	65,850.00	
	Program Expenditures	<u>898,695.48</u>	
			<u>1,049,019.40</u>
	Grand Total		<u>\$1,369,666.93</u>

## Kruger Clinic Restroom Project

Estimate as of July 18, 2016

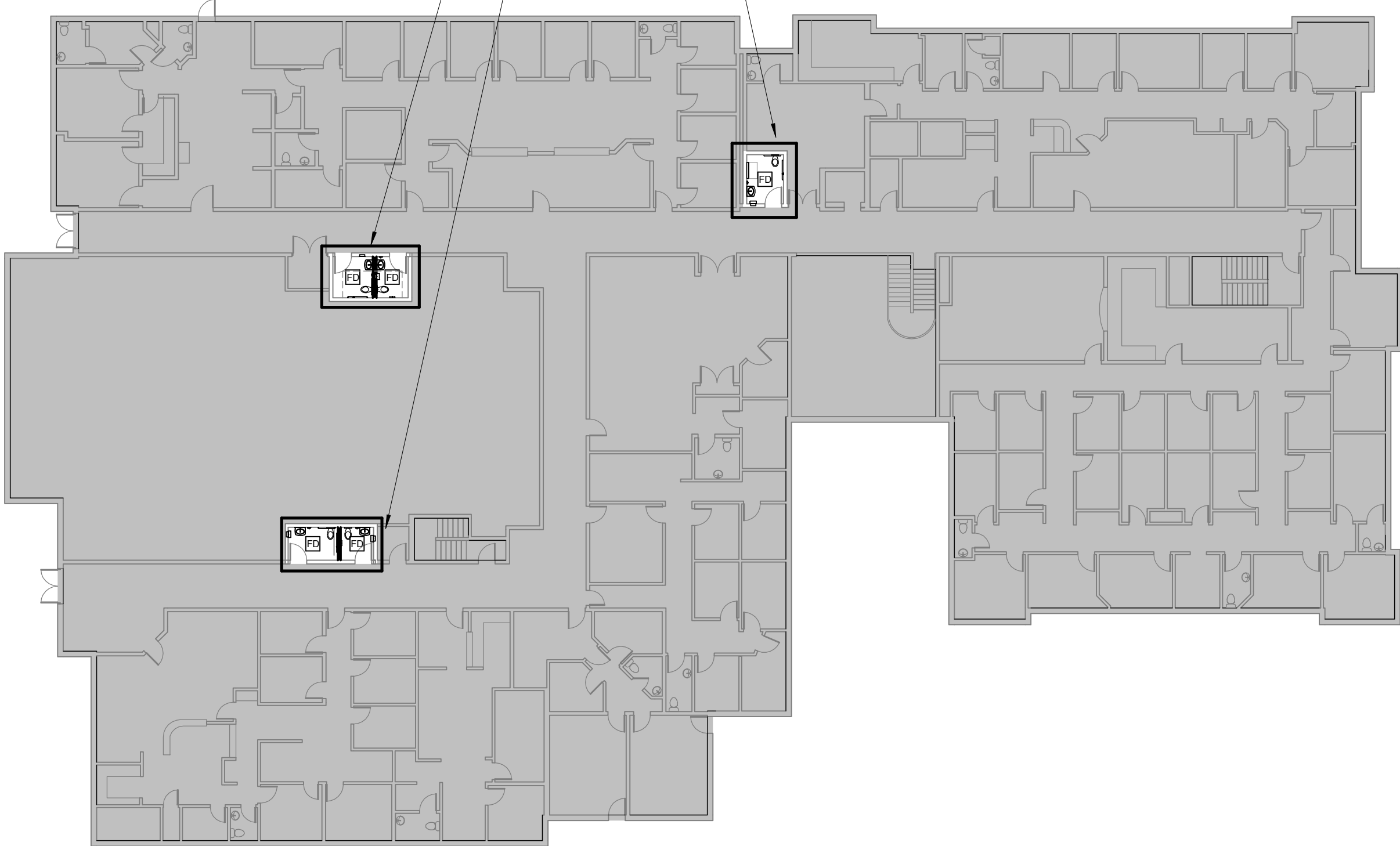
Service	Company	Cost
Project Management	Healthcare Realty	\$15,286.49
Architect fee	Ankrom Moisan Architects, Inc	\$25,327.00
Permit fee	City of Edmonds	\$1,173.00
Construction	Ferris Turney	\$208,280.00
Sales Tax	9.6% WSST	\$19,994.88
	<b>Total costs:</b>	<b>\$270,061.37</b>



PROJECT

## KEY PLAN - LEVEL 1

A1.00 | 1" = 20'-0"

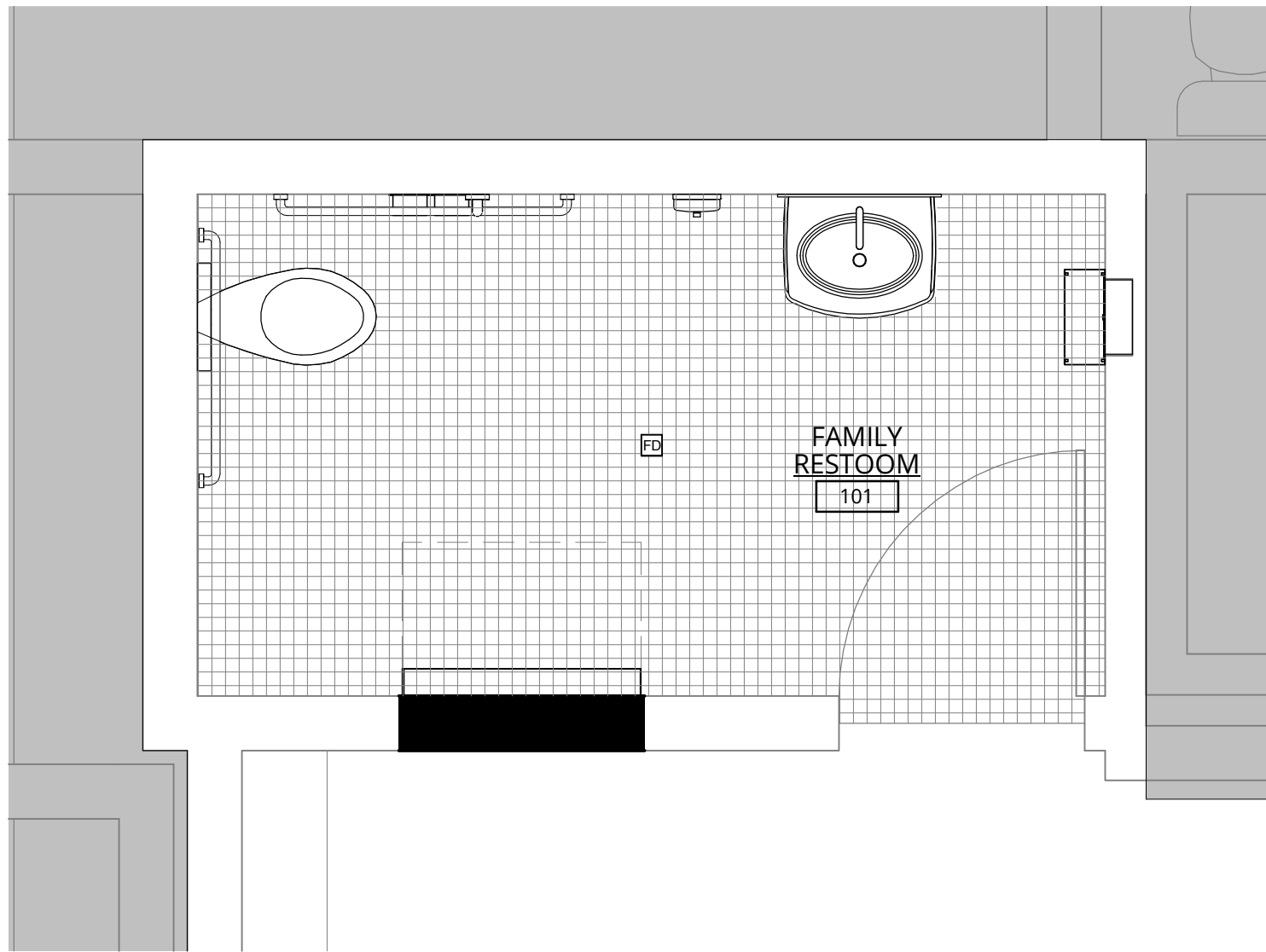


PROJECT

## KEY PLAN - LEVEL 2

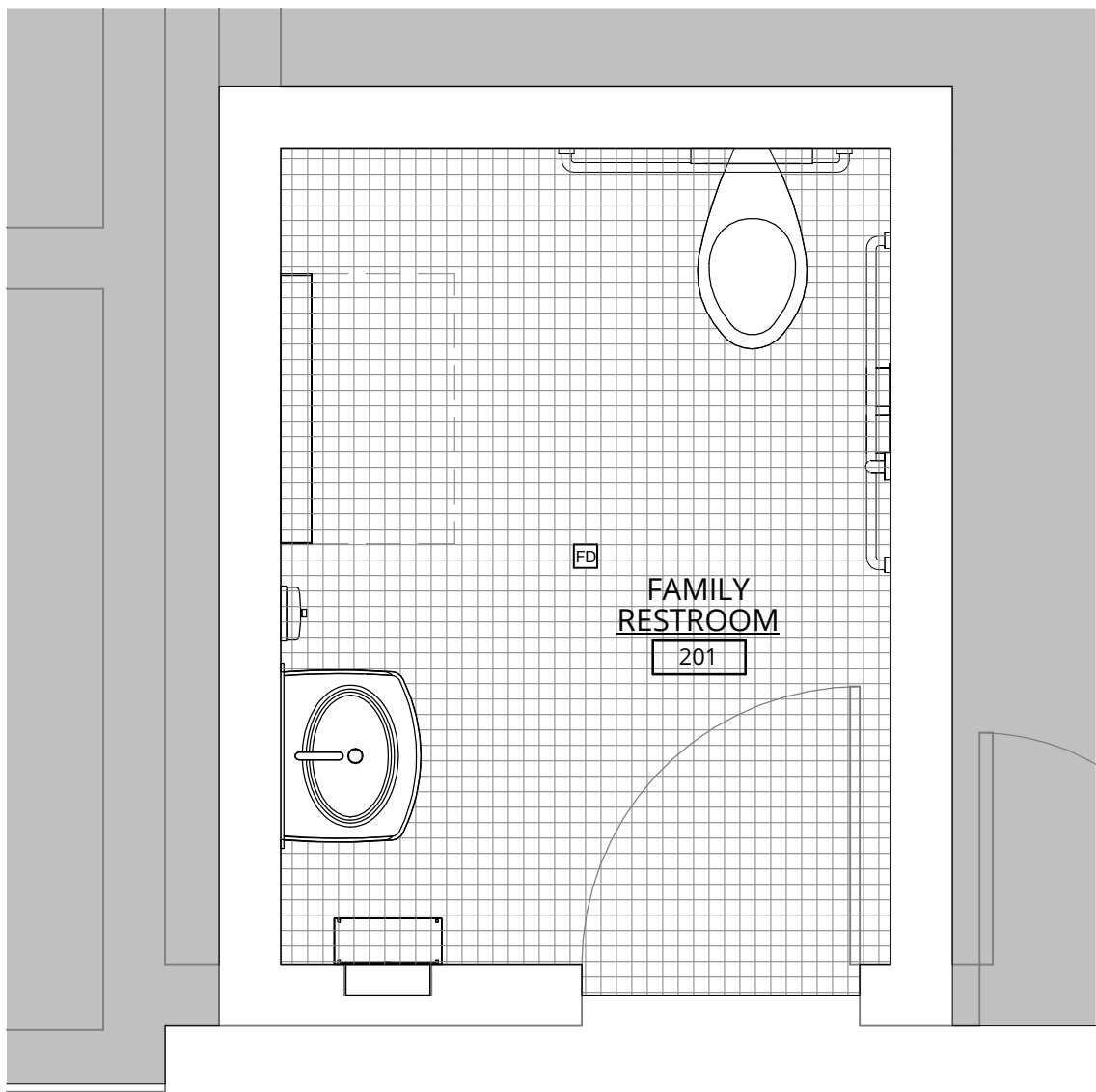
A1.00 | 1" = 20'-0"





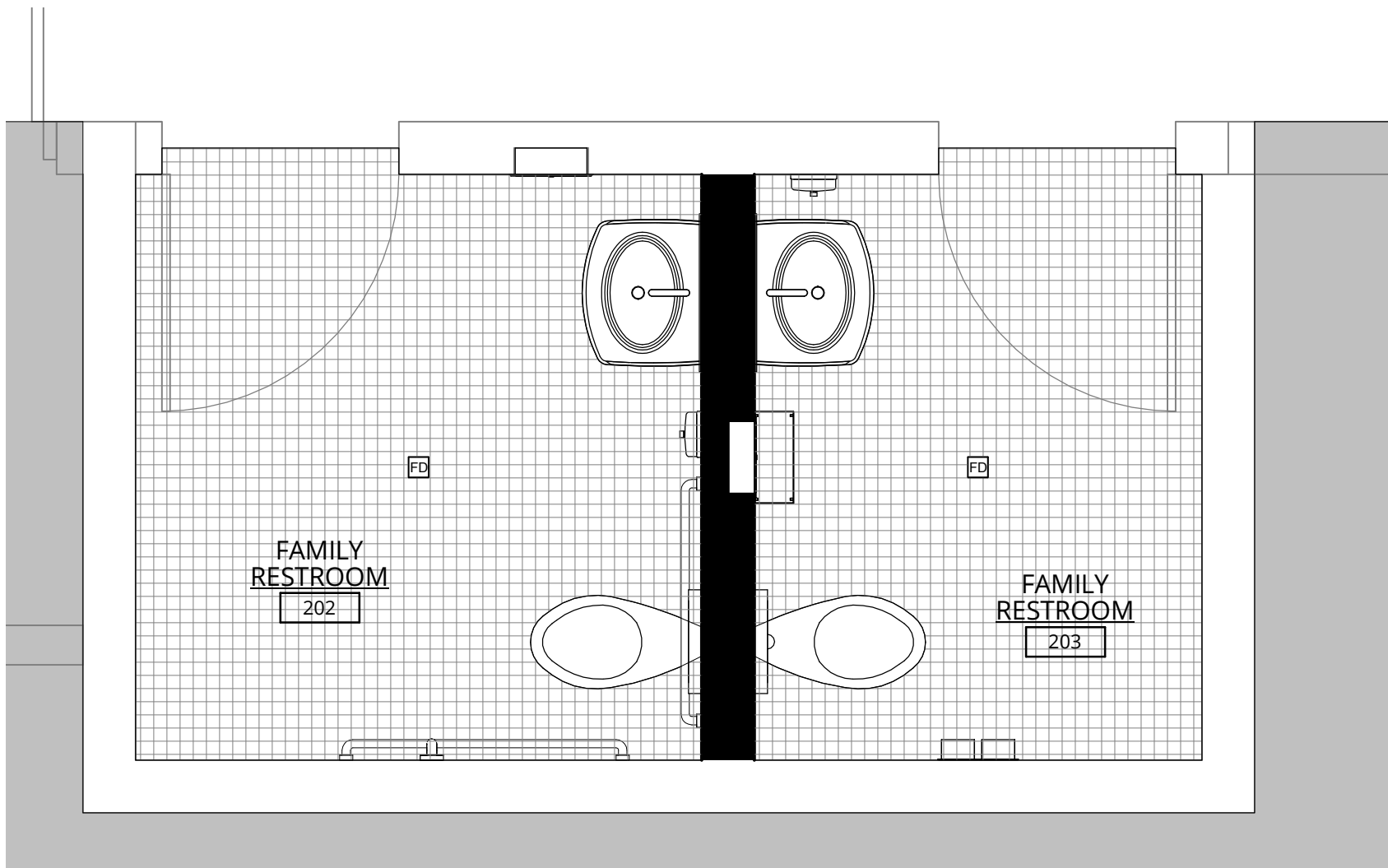
**1** LEVEL 1 FINISH PLAN

A1.08 | 1/2" = 1'-0"



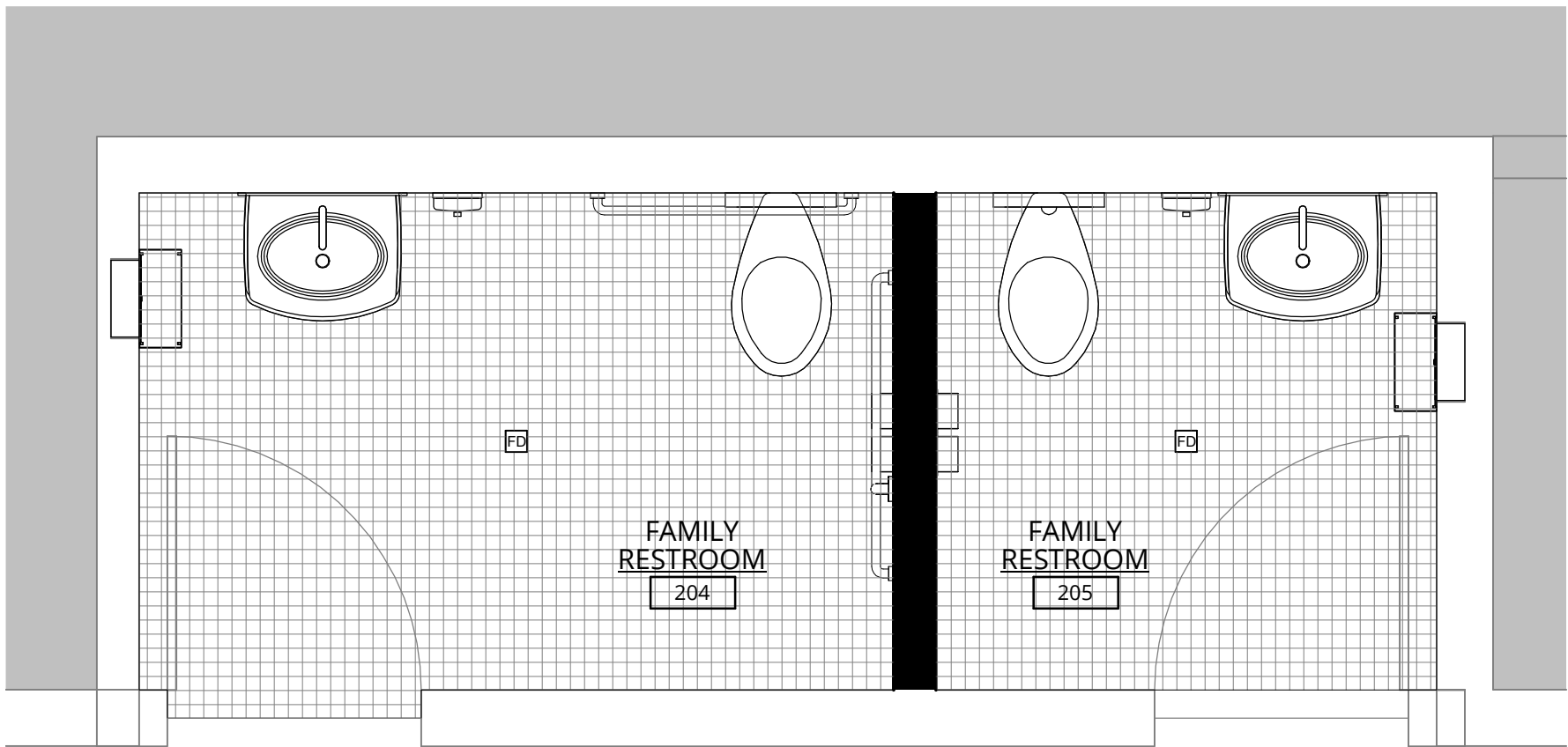
**2** LEVEL 2 RR 1 - FINISH PLAN

A1.08 | 1/2" = 1'-0"



**3** LEVEL 2 RR 2 - FINISH PLAN

A1.08 | 1/2" = 1'-0"



**4** LEVEL 2 RR 3 - FINISH PLAN

A1.08 | 1/2" = 1'-0"



BID SHEET

ADA Restroom Upgrade  
Kruger Clinic BID

Having carefully examined all documents enclosed herein, the undersigned proposes to perform all work in strict compliance with all documents, for the amount set forth below.

- ☐ Bid sheet must be signed.
- ☐ Use ink and print legibly.
- ☐ Unit prices, when relevant, are mandatory and shall control.
- ☐ Initial and date any changes, erasures or cross-outs.
- ☐ Include a breakdown for additional construction costs

Construction Costs (Temp Protection, mobilization, clean up, & final clean)	\$7697
Demo, saw cutting, concrete pour back & Disposal Costs	\$9162
Plumbing	\$53802
Electrical	\$29260
Carpentry (backing for fixtures, accessories, etc)	\$1796
Fixtures (bathroom accessories & bathroom fans, plumbing fixtures are in plumbing number)	\$12621
Materials (general conditions & small tools)	\$10159
Project Management (PM & PE hours)	\$3276
Labor (included in individual line items above)	\$N/A
Additional Costs, please list short description:(performance bond, supervision, framing drywall, ceramic tile, & painting)	\$58723

Total Bid (not including tax) \$ 208280  
Tax: \$ 19995

Total Bid Including Tax: \$ 228275

Vendor Name: Ferris-Turney General Contractors

Signature:  Date: 8/17/16

Title: Project Manager

**HOSPITAL DISTRICT  
ADA Restroom Remodel  
Response Cover Sheet**

	Yes	No
Has your company operated at least one (1) year without interruption?	<input checked="" type="checkbox"/>	<input type="checkbox"/>
Has an owner of your company been convicted of a crime within the past ten (10) years?	<input type="checkbox"/>	<input checked="" type="checkbox"/>
Does your company have experience working in a medical facility?	<input checked="" type="checkbox"/>	<input type="checkbox"/>
Does any employee or official of the Hospital District have any financial or other interest in your firm?	<input type="checkbox"/>	<input checked="" type="checkbox"/>
Does your company maintain insurance in amounts specified by Hospital District contract? (if no, this does not necessarily eliminate vendor from submittal):	<input checked="" type="checkbox"/>	<input type="checkbox"/>
If no, describe differences: _____		
Are there any claims pending against this insurance policy?	<input type="checkbox"/>	<input checked="" type="checkbox"/>
If yes, describe _____		
Does your company maintain Professional Liability Insurance?	<input checked="" type="checkbox"/>	<input type="checkbox"/>
Has your company been in bankruptcy, reorganization or receivership in the last five years?	<input type="checkbox"/>	<input checked="" type="checkbox"/>
Has your company been disqualified by any public agency from participation in public contracts?	<input type="checkbox"/>	<input checked="" type="checkbox"/>
Is your company licensed to do business in the State of Washington?	<input checked="" type="checkbox"/>	<input type="checkbox"/>
Are you on Comptroller General's list of ineligible vendors or list of parties excluded from federal procurement or non-procurement programs?	<input type="checkbox"/>	<input checked="" type="checkbox"/>

*The undersigned acknowledges that addenda \_\_\_\_\_ through \_\_\_\_\_ have been taken into account as part of this requirement.*

**The undersigned hereby accepts the terms and conditions as set forth herein. This page must be signed and dated by the vendor's representative who is legally authorized to contractually bind the vendor.**

FULL LEGAL NAME OF COMPANY Ferris-Turney General Contractors, Inc.

TYPE OF BUSINESS ☒ Corporation ☐ Partnership (general) ☐ Partnership (limited)  
☐ Sole Proprietorship ☐ Limited Liability Company

FEDERAL EMPLOYEE ID NUMBER (FEI) 91-1830860

ADDRESS PO Box 31109

CITY/STATE/ZIP Seattle, WA 98103

EMAIL ADDRESS joshm@ferris-turney.com

PHONE 206-632-2797

FAX 206-632-2796

NAME (Please Print) Lindsey Ferris

TITLE Finance & Admin.

SIGNED 

DATE 07/13/2016

## August 2016 Program Summary

1. Five applications for renewal funding
2. Five new funding applications
3. Final Senior Services of Snohomish County follow-up
4. Review Building Healthy Communities Fund Applications: decisions not planned for today; recommending finalists for board presentations
5. Board presentation and update from Community Health Center of Snohomish County

### 1. Renewal Applications

- A. Puget Sound Christian Clinic – Mental Health Counseling:** a renewal request for a counseling program operated by Puget Sound Christian Clinic. The clinic runs at the same site as the mobile medical clinic and uses masters-level counseling interns. The program would like to add one more (ideally bilingual) counselor to the program as part of its expansion efforts.

The program started slow, but has increased service numbers and served 25 clients in year 2 (goal of 30). The program would seek to expand to 55 served with an additional counselor. The request is for \$51,400 per year for 3 years, with an increase sought for additional counseling intern and supervision time. The original grant was \$15,000 for the first year, \$20,000 in the second, and \$25,000 in the third.

**The program committee is recommending partial funding of the request at \$25,000 in the first year, \$30,000 in the second year and \$35,000 in the third year.**

- B. Prescription Drug Assistance Foundation:** a program that helps low-income patients to access medications, mostly through manufacturer assistance programs. The goal is to serve 150 individuals per year (previous goal was to serve 200 per year). Last year, district residents accessed 229 medications for an average value of \$8,508 per person, and an average value per medication of \$3,342, which translates to an estimated payback of 20:1 with more than \$1 million of medications provided in last 12 months. The program is requesting continuation of funding at the same level as previously, \$50,000 per year. The applicant has also submitted a separate one-time request to explore a volunteer-based model.

**The program committee is recommending fully funding the request at \$50,000 per year for 3 years.**

- C. Kindering – Early Intervention Program:** a renewal request to support a program that includes physical, speech, occupational, feeding, mental health and other therapies for children with delays and disabilities. The program has more than doubled its goal for service numbers, serving 127 in their first year compared to a goal of 54 families. The program tracks outcomes in developmental areas using objective measurements. Kindering was initially funded at \$90,000 per year for two years and is requesting \$138,206 per year for three more years (53% increase).

**The program committee is interested in exploring renewed funding, but would like to see if any increase in funding could be more directly tied to behavioral health services like counseling or applied behavioral analysis (ABA) therapy that is in high demand.**

- D. Edmonds School District – Student Support Advocates:** a multi-year request to expand the Edmonds School Prevention & Intervention Program, which is currently staffed at each middle and high school. The program focuses on students identified as high risk for alcohol/drug use, mental health issues, absenteeism, and homelessness. The renewal would add a staff member at Scriber Lake HS.

**The program committee recommends renewing the program, but is not interested in funding ongoing 5% cost-of-living-increases.** The current grant level is \$310,586 per year, and the program includes funding from Snohomish County Human Services. The committee wanted the Verdant board to discuss two funding options:

- **Option 1:** provide funding at existing level, plus for an additional staff member at Scriber Lake HS for a total of \$395,000 per year for three years.
- **Option 2:** provide funding at existing level and for 50% of a new staff member (\$353,000 per year), with expectation that school district finds a match or uses internal resources to fill the extra position.

- E. Edmonds Center for the Arts (ECA) – Dementia Inclusive Series:** a request for the ECA’s Dementia-Inclusive Series, which is designed to create opportunities for people with dementia, their families and care partners to connect and experience joy through the arts. The program would include 4 workshops with Taproot Theatre, called “Re-Ignite the Mind with Improvisation & Play,” a series of dance workshops and several films. Verdant previously provided funding on a one-time basis at \$5,000, essentially as an event sponsorship, and ECA is requesting \$8,500 per year for two years.

**The program committee is not recommending the program for funding at this time, because there were not well-defined health outcomes from the program.**

## **2. New Funding Applications**

- A. Cocoon House – South Snohomish County Parent & Teen Outreach Program:** a request from an Everett-based non-profit that would like to increase its outreach efforts in South Snohomish County to serve homeless and at-risk youth and their families. The applicant is seeking \$120,000 per year for three years to support two new staff members and the use of Verdant's space for 3 advocates (including one existing staff member). The program purpose would focus on two issues: intervention with homeless youth and prevention with at-risk families.

**The program committee is recommending partially funding the request at \$60,000 per year for two years.** The committee was interested in supporting the project at a lower level to see what kind of results could be generated.

- B. Prescription Drug Assistance Foundation - South County Volunteer Network:** a one-time request to pilot a volunteer-driven prescription assistance program. The goal would be to complete a feasibility study around a volunteer program and begin implementation of a program that would train volunteers to help individuals access prescription assistance programs.

**The program committee is recommending funding the project in full at \$10,000 on a one-time basis.**

- C. Sqord – Gear Up and Go Program:** after 3 years of a countywide fifth grade activity program, the Gear Up and Go activity program is spinning off from the Snohomish County Health Leadership Coalition. Sqord is requesting \$25,000 in funding to purchase activity tracking devices and support programming at 7 Edmonds Schools. The program provides the opportunity to measure children’s activity levels and uses technology to encourage them to meet daily activity levels.

**The program committee is not recommending funding the project because the health outcomes from the project were not clear.**

- D. Snohomish County STEM Network (Washington Alliance for Better Schools as fiscal agent):** a funding request to support the Snohomish STEM Network to increase the number of students who are STEM literate, and to increase the number going on in STEM and healthcare education/training or entering STEM and healthcare careers. Funds would be used to support "after the bell" activities to increase interest in science and tech fields and mini-externship programs. The STEM Network is requesting \$35,000 per year on the project.

**The program committee is not recommending funding the project because STEM education (even if it includes healthcare careers) does not fit Verdant’s funding priorities.**

- E. Edmonds School District/Alderwood Middle School – Equipping Students to Thrive:** a project at Alderwood Middle School designed to build resiliency and support middle school youth. The project would develop a 4 week social/emotional program for all school students, and add a My Achievers Program through the YMCA. Verdant funds would be used to staff the program for an emotional literacy specialist who would develop curriculum and work with the school psychologist and classroom teachers. The request is for \$115,000 per year for three years.

**The program committee is recommending the applicant rework the proposal.** There was interest in the concept of building resiliency in teens, but the request was too large for a pilot program and the expected results were not completely clear.

### 3. Senior Services of Snohomish County – Center for Healthy Living Supplemental Request

At Verdant’s June mini-retreat, Senior Services of Snohomish County staff shared a detailed presentation of their programs and anticipated funding shortfalls by category. The organization also provided some additional information about the zip codes that are served by the center, which shows that the services reach South Snohomish County broadly and beyond the Lynnwood location.

**After further discussion, the program committee is recommending an additional \$73,800 of funding per year to be targeted at mental health and dental services.** The additional funding would be timed to coincide with the existing program grant for the Center for Healthy Living, through the fall of 2018.

### 4. Building Healthy Communities Fund Applications

- Sixteen applications received for \$8.5 million in funding
- Process last cycle: invite top candidates in for full board study session, Q&A
- Budget assumption has been \$1m per year for three years

Top proposals for follow-up:

- Recommend inviting the top three: Sea Mar Community Health Centers, Edmonds Senior Center, and Volunteers of America Community Resource Center.
- Also potentially interested in exploring City of Edmonds and Town of Woodway outdoor fitness equipment requests.
- Scored in five categories: Connection to Verdant priorities, measurable health outcomes, cooperation between multiple entities, leverage & budget, and sustainability.
- A few proposals were not a good fit for the Building Healthy Communities Fund, but could fit in Verdant’s regular program funding and will be encouraged to apply (ex. Easter Seals and Edmonds Family Medicine/Center for Human Services).

#### Top Scoring Proposals

#	Name	Description	Request
1	Sea Mar Community Health Centers - South Snohomish County Medical, Dental, and Behavioral Health Services	A request for funding to open an integrated clinic complete with medical, dental and behavioral health services, including mental health therapy and substance abuse treatment services. Behavioral health services at the current Lynnwood clinic will move to the new location, and expand to include a dedicated Child and Family Services department.	\$1,000,000

<b>2</b>	Edmonds Senior Center - Community Center Construction	A request to support the construction of a new Edmonds Senior & Community Center (Edmonds Waterfront Center). City to program parks and recreation activity in center during evenings.	\$1,750,000
<b>3</b>	Volunteers of America - South Snohomish County Resource Center	Trinity Lutheran Church (TLC), Volunteers of America Western Washington (VOAWW), and Boys & Girls Clubs of Snohomish County (BGCSC) are partnering to build the South County Community Resource Center near the intersection of Hwy 99 and 196th St. SW. The project will construct a 36,000 sq. ft. Resource Center to include a large gymnasium, a games arena for a range of physical activities, a teaching kitchen, a controlled adult day program area, a licensed daycare as well as fitness and education resources normally associated with Boys & Girls Clubs.	\$1,500,000

#### Other Proposals Received

<b>4</b>	City of Mountlake Terrace - Evergreen Playfields Renovation	A request to fund a new turf field in Mountlake Terrace to include organic infill, LED lighting, and other improvements.	\$1,250,000
<b>5</b>	City of Edmonds - Edmonds Outdoor Fitness	A request for funds to support the installation of three outdoor fitness zones. Each fitness zone would have 8-12 pieces of durable exercise equipment in Mathay Ballinger, Seaview, and City Park.	\$100,000
<b>6</b>	Town of Woodway - Deer Creek Park & Walking Trail Phase II	Deer Creek Park and Walking Trail project will be a looped trail of approximately .75 miles through a 4.38-acre site in Woodway. Request also includes and outdoor exercise circuit.	\$47,500
<b>7</b>	The Trust for Public Land - Healthy Connected South Snohomish County	TPL seeks funding to help municipalities in South Snohomish County strategically deploy parks and trails as key tools for improved community health, particularly in underserved communities. TPL will work with Lynnwood, Edmonds, Mountlake Terrace, Snohomish County, and other stakeholders to implement the project.	\$1,200,000
<b>8</b>	Cities of Lynnwood, Edmonds and Edmonds School District - Meadowdale Playfields	A request for the Meadowdale Playfields that include softball and soccer fields. Funding partners include the City of Lynnwood, City of Edmonds, Edmonds School District, Washington State, and Snohomish County. This grant proposal seeks \$1.145 million support from the Verdant Health Commission to fund the design and construction of the safety fencing component of the project.	\$1,145,000



<b>9</b>	Easter Seals of Washington - Autism Center	Easter Seals proposes to launch an autism center that will provide multiple services. The core service provided will be Applied Behavioral Analysis (ABA) therapy for children and young adults, ages two to 21.	\$90,000
<b>10</b>	Habitat for Humanity - Twin Creek Village Development	A request to support the development of 28 single and multi-family units in South Everett. Funds would be used for predevelopment costs.	\$10,000
<b>11</b>	Edmonds Family Medicine & Center for Human Services - Behavioral Health Integration	A program to integrate behavioral health and primary care at a medical clinic. Two clinicians from CHS would be located at the EFM to screen for behavioral health issues and provide "warm hand-off." Interventions to include patient education, Cognitive Behavioral Therapy (CBT), Solution Focused Brief Therapy (SFBT), and Motivational Interviewing.	\$190,999
<b>12</b>	Mountlake Terrace Senior Center - Healthy Living Initiative	To supplement and expand current health and wellness programs. To increase ability to offer massages, exercise programs, legal clinics, etc. blood pressure monitoring; more active programs for younger Seniors.	\$180,000 (\$60,000 per year)
<b>13</b>	City of Bothell - Bothell Walking & Trails Guide Project	The project goal is to create a City Walking and Trails Guide while also forging community sponsorships that would promote improved health and walking in Bothell. This would be done by mapping existing trail networks in Bothell and also identifying walking routes and walkable areas in Bothell as well.	\$10,000
<b>14</b>	Cascade Bicycle Club - Improving Connectivity in South Snohomish County	Light Rail is expected in Lynnwood in 7 years, with 80% of riders walking, biking, or being dropped off at the station. Cascade proposes to engage Brier, Bothell, Edmonds, Lynnwood and Mountlake Terrace in developing planning and specific project recommendations so that people can safely and comfortably bike and walk to these stations.	\$30,000
<b>15</b>	Mountlake Terrace Senior Center - Transportation (Driver)	To supplement and expand current health and wellness programs and increase access availability via transportation to Center and area programs (such as taking members to medical/dental programs already in place in community). To increase ability to offer massages, exercise programs, legal clinics, etc. Blood pressure monitoring; More active programs for younger Seniors.	\$22,500 (\$7,500 per year)
<b>16</b>	Mountlake Terrace Senior Center - Upgrade Dishwasher	Grant would update the dishwasher and allow senior center to keep meals and other nutritional programs operating.	\$7,500

**Program Payouts From Building Healthy Communities Fund**

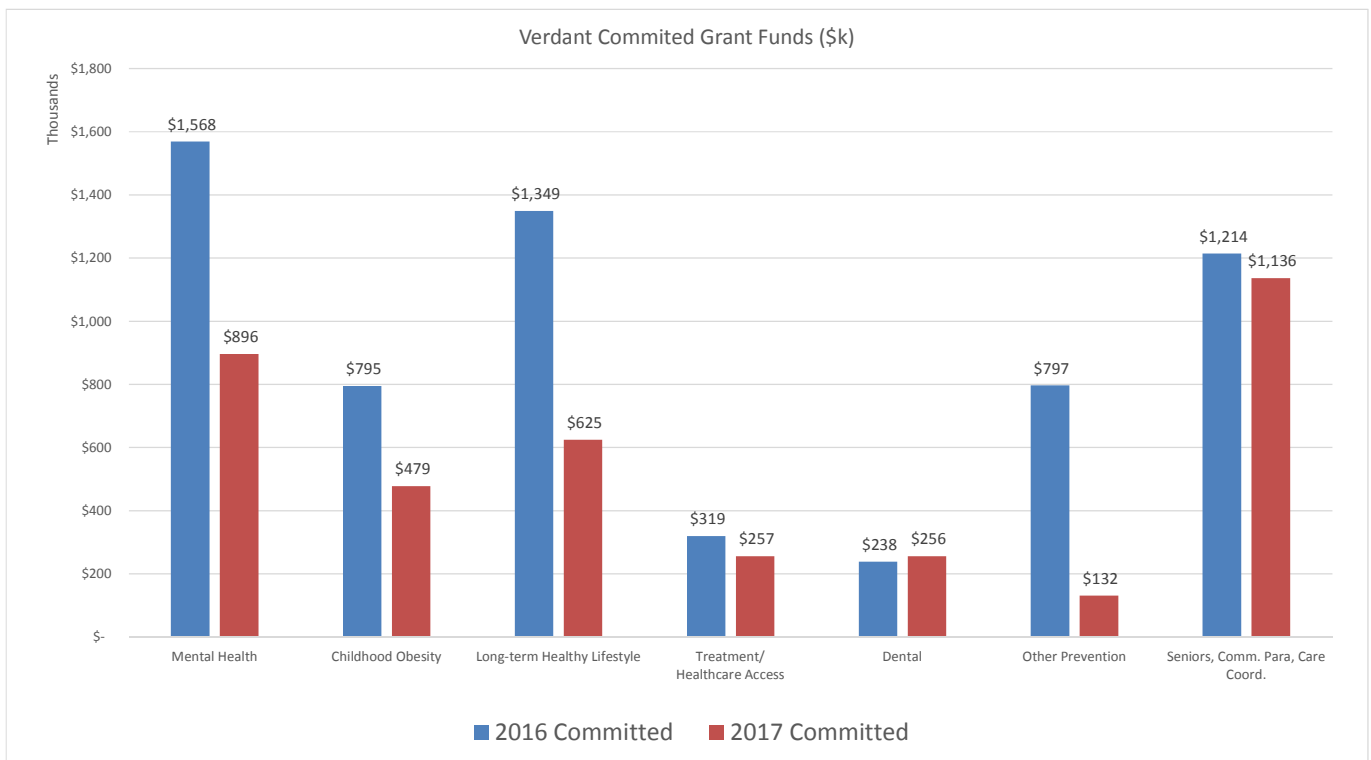
<b>Project Name</b>	<b>2014</b>	<b>2015</b>	<b>2016</b>	<b>2017</b>
Woodway Recreation Campus Renovation	\$625,000	\$625,000	\$625,000	\$625,000
Bike2Health	\$470,000	\$706,000	\$724,000	
City of Brier Walking Path	\$90,345			
City of Edmonds Exercise Program	\$39,513			
<b>Total Payments</b>	<b>\$1,224,858</b>	<b>\$1,331,000</b>	<b>\$1,349,000</b>	<b>\$625,000</b>

**Program Payout Schedule  
as of August 2016**

A		B	C	
		Budget 2016	Budget 2017	Program End
<b>7100 . Grants</b>				
	<b>Committed</b>			
	Center for Human Services Counseling	\$ 165,000	\$ 165,000	Dec-17
	CHC Behavioral Health Integration	\$ 300,000	\$ 25,000	Feb-17
	ChildStrive Nurse Family Partnership	\$ 280,000	\$ 280,000	Dec-18
	Domestic Violence Services Teen Prevention	\$ 22,266	\$ 22,266	Jun-18
	Edmonds Community College Veteran's Support	\$ 52,756	\$ 30,774	Jul-17
	Edmonds Schools Student Support Advocate	\$ 310,586		Dec-16
	PSCC Mental Health Counseling Program	\$ 16,668		Aug-16
	Snohomish County Music Project	\$ 26,583		Nov-16
	Therapeutic Health Services Youth Behavioral	\$ 200,000	\$ 100,000	Jun-17
	YWCA Children's Domestic Violence	\$ 25,000	\$ 25,000	Jul-18
	YWCA Mental Health Counseling	\$ 25,000	\$ 25,000	Dec-18
	Boys & Girls Club Healthy Habits	\$ 102,667		Aug-16
	Compass Health CPIT Program	\$ 144,435	\$ 222,870	Jul-18
	Campfire	\$ 50,000	\$ 50,000	Dec-17
	City of Lynnwood Move 60: Teens!	\$ 73,729	\$ 73,729	Dec-17
	Edmonds School District Move 60!	\$ 518,637	\$ 354,857	Aug-17
	Snohomish County Health Leadership Coalition	\$ 50,000		Mar-17
	LCSNW Health Access for Underserved	\$ 94,051	\$ 70,538	Sep-17
	Prescription Drug Assistance Program	\$ 20,833		Jun-17
	Project Access Northwest	\$ 90,000	\$ 90,000	Jun-18
	PSCC Mobile Medical Clinic	\$ 102,600	\$ 96,000	Dec-17
	CHC of Snohomish County Dental Program	\$ 62,500		Jun-16
	MTI Mobile Dental Program	\$ 66,000	\$ 66,000	Aug-18
	PSCC Dental Clinic	\$ 110,000	\$ 190,000	Jun-19
	3rd Grade Swim Lessons	\$ 50,000	\$ 50,000	Sep-17
	Alzheimer's Association	\$ 86,510		Dec-16
	American Red Cross CPR Training	\$ 7,500		Jul-16
	Brain Injury Alliance Support Program	\$ 42,500	\$ 30,000	Jun-18
	Cascade Bicycling Club Advanced Basics	\$ 32,000	\$ 32,000	Dec-18
	City of Lynnwood Fire Mobile Integrated Care	\$ (58,355)		Complete
	Community Paramedic	\$ 344,000	\$ 344,000	Dec-18
	FD1/OMF Veteran's Project	\$ 44,620	\$ 89,240	tbd
	Korean Women's Association Everyday Prevention	\$ 60,000	\$ 60,000	Dec-17
	EdCC Student Health & Wellness Program	\$ 29,847		Jun-16
	Edmonds Senior Center Enhanced Wellness	\$ 110,000	\$ 82,500	Sep-17
	Kinderling Early Intervention	\$ 67,500		Sep-16
	MRC Training Program	\$ 10,100		Jun-16
	PEPS	\$ 35,850		Dec-16
	Puget Sound Kidney Center	\$ 45,833		Nov-16
	Seattle Visiting Nurses Flu Vaccines	\$ 28,585		Mar-16
	Senior Services Center for Healthy Living	\$ 560,240	\$ 560,240	Sep-18

**Program Payout Schedule  
as of August 2016**

	Senior Services Care Coordination	\$ 135,000		Dec-16
	Alpha Supported Living (formerly Smithwright)	\$ 65,000		Dec-16
	American Diabetes Association	\$ 25,000	\$ 15,000	Dec-18
	Wonderland Development Center	\$ 90,000		Aug-16
	American Red Cross Family Fire Prevention	\$ 5,000	\$ 5,000	May-18
	<b>Total Committed</b>	<b>\$ 4,726,041</b>	<b>\$ 3,155,015</b>	
	<b>Not Committed (Available to Spend)</b>	<b>\$ 1,261,313</b>	<b>\$ -</b>	
	<b>Total Grants</b>	<b>\$ 5,987,354</b>	<b>\$ 3,155,015</b>	
	<b>7300 . Internal Programs</b>			
	<b>Committed</b>			
	VWCW Programs (budget)	\$ 105,000		
	VOAWW 211 Community Resource Advocate	\$ 78,646		Dec-16
	<b>Total Committed</b>	<b>\$ 183,646</b>	<b>\$ -</b>	
	<b>Not Committed (Available to Spend)</b>	<b>\$ 0</b>	<b>\$ -</b>	
	<b>Total Internal Programs</b>	<b>\$ 183,646</b>	<b>\$ -</b>	
	<b>7200 . Discretionary</b>			
	<b>Committed</b>			
	ASEdCC Food Choice Goal Committee	\$ 613		One-time
	Cedar Way PTO 5k	\$ 300		One-time
	Edmonds Chamber 5k	\$ 2,500		One-time
	Washington Alliance for Better Schools Showcase of Success	\$ 500		One-time
	Edmonds Senior Center Health Fair	\$ 1,000		One-time
	Edmonds Senior Center CAFÉ	\$ 5,000		One-time
	City of Edmonds Health & Fitness Expo	\$ 2,000		One-time
	<b>Total Committed</b>	<b>\$ 11,913</b>	<b>\$ -</b>	
	<b>Not Committed (Available to Spend)</b>	<b>\$ 38,087</b>	<b>\$ -</b>	
	<b>Total Discretionary Programs</b>	<b>\$ 50,000</b>	<b>\$ -</b>	
	<b>7500 . Building Healthy Communities Fund</b>			
	<b>Committed</b>			
	Woodway Recreation Campus Renovation	\$ 625,000	\$ 625,000	Jan '17 final pmt
	Bike2Health	\$ 724,000		Dec '16 final pmt
	<b>Total Committed</b>	<b>\$ 1,349,000</b>	<b>\$ 625,000</b>	
	<b>Not Committed (Available to Spend)</b>	<b>\$ -</b>	<b>\$ -</b>	
	<b>Total BHCF Programs</b>	<b>\$ 1,349,000</b>	<b>\$ 625,000</b>	
	<b>7400 . One time Events</b>			
	<b>Committed</b>			
	Back to School Health Fair	\$ 12,000		One-time
	Hope Heart Institute	\$ 5,000		One-time
	Edmonds School Foundation Summer Meals	\$ 8,400		One-time
	LETI Latino Expo	\$ 5,000		One-time
	<b>Total Committed</b>	<b>\$ 30,400</b>	<b>\$ -</b>	
	<b>Not Committed (Available to Spend)</b>	<b>\$ 29,600</b>	<b>\$ -</b>	
	<b>Total One Time Events Programs</b>	<b>\$ 60,000</b>	<b>\$ -</b>	
	<b>TOTAL</b>	<b>\$ 7,630,000</b>	<b>\$ 3,780,015</b>	<b>\$ 6,281,300</b>



**Verdant Community Wellness Center Summary**  
**August 2016**

**Completed Programs**

<b>A. General Community and Provider Events</b>	<b>Attendance</b>
1. UW-Bothell Nursing Student Field Trip and Verdant Tour (7/26)	22
2. Community Health Worker Coalition (8/1)	10
3. Little Wonders Support Group for Parents of Special Needs Infants (8/2)*	8
4. Advanced Care Planning Community Workshop (8/2)*	15
5. Korean Women's Association: Everyday Nutrition (8/4)*	40
6. Senior Services Leadership Meeting (8/5)	20
7. WAHA North Sound Regional IPA Meeting (8/5)	25
8. Casa Latina Immigration and Health Forum (8/5)	80
9. ARC Mothers of Children with Disabilities Support Network (8/6)	16
10. City of Lynnwood Community Public Safety Meeting (8/9)	20
11. Senior Services Social Worker Training (8/10)	40
12. Evergreen Home Health (8/9, 16)	50
13. Understanding Medicare Monthly Workshops (8/19)	22
14. Ongoing – Community Support for Prescription Assistance (weekly)*	varies

<b>B. Nutrition and Healthy Behaviors</b>	<b>Attendance</b>
1. AHA Kids Cook with Heart Series (7/18 – 8/2)	16
2. Sound Health Physicians Cooking Class (7/27)	12
3. Cooking Demo – Incorporating Seasonal Produce in Your Meals (8 /1)*	18
4. Surviving & Thriving with Chronic Kidney Disease ( August 8/3, 10)*	44
5. Spanish Language Cooking Class (8/13)*	8
6. Teens in the Kitchen Cooking Class (August 17)*	14
7. Quick and Delicious Cooking for One or Two	21
8. Lifestyle Change Check-Ins (drop – in 1 <sup>st</sup> and 3 <sup>rd</sup> Tuesdays)*	12-18
9. Getting to Goal Program (Weight Management Consultations)*	varies

<b>C. Behavioral Health &amp; Substance Use</b>	<b>Attendance</b>
1. YWCA Grief and Loss Support Group (6/14 – 8/9)*	6-8
2. Spanish Language Parenting Class with Childcare (7/7 – 8/16)*	30-36
3. Snohomish County Caregiver and Kinship Support Groups (8/4, 16, 18)	varies
4. Brain Health and Wellness Classes (8/1, 3, 9, 10, 16, 17)*	2-8
5. YWCA Mindfulness Training (7/13 – 8/31)*	6-10
6. Evergreen Bereavement Informational Workshop (8/10)	varies
7. National Alliance on Mental Illness "Connections" Support Group (8/11, 25)	4-8
8. Adult Children of Alcoholics Weekly Support Group (ongoing)	8-12
9. Veterans Drop-In Support (weekly - City of Lynnwood & monthly - County)	varies

<b>D. Other Programs</b>	<b>Attendance</b>
1. Play and Learn Group, Wonderland Development Center (weekly)*	25-30

## **Verdant Community Wellness Center Summary**

### **August 2016**

#### **Upcoming Programs**

##### **E. General Community and Provider Events**

1. Volunteer Management for Non-profits (August 23)
2. Early Achievers Strengthening Families Training (August 27)
3. Edmonds School District Deaf & Hard of Hearing Staff Meeting (August 29)
4. Children's Administration Meeting (August 30)
5. Edmonds School District Maplewood Center Student Support Planning Meeting (August 31)
6. Korean Women's Association: Everyday Fall Prevention and Yoga (September 1)\*
7. ARC Mothers of Children with Disabilities Monthly Support Network (September 3)
8. SHIBA Monthly Update Meeting (September 6)
9. Senior Services Housing Social Worker Training (September 6)
10. Little Wonders Support Group for Parents of Special Needs Infants (September 6)\*
11. Spanish Language Community Dialogue Session (September 13)
12. Verdant Resource Connectors Quarterly Meeting (September 13)
13. Girls on the Run Coach Training (September 13, 15)
14. Lunch with Leaders (September 14)
15. Evergreen Home Health (September 14, 20)
16. Verdant Promotora/Community Health Worker Training (September 16 – November 4)
17. Understanding Medicare Monthly Workshops (September 16)
18. Medical Reserve Corps CPR, First Aid and NIMS Training (September 17)\*
19. Basic Food Forum (September 26)

##### **F. Nutrition and Healthy Behaviors**

1. Cooking Demo – Incorporating Seasonal Produce in Your Meals (August 22)\*
2. Packing Healthy Lunches: Family Cooking Class (August 27)\*
3. Surviving & Thriving with Chronic Kidney Disease (September 14 – October 12)\*
4. Stop Diabetes Initiative Workshop (September 17)\*
5. Meatless Mondays (September 22)\*
6. Fall Harvest Cooking Demo (September 29)\*

##### **G. Behavioral Health & Substance Use Focus**

1. YWCA Mindfulness Training (July 13 – August 31)\*
2. Brain Health and Wellness Classes (August 23, 24, 30, 31 September 7, 12, 14, 19, 20, 26, 27) \*
3. Snohomish County Caregiver and Kinship Caregiver Support Groups (September 1, 15, 20)
4. Foster Parent Seminar (September 3, 10, 24 October 1)
5. Youth Mental Health First Aid Training (September 8 -29)
6. National Alliance on Mental Illness "Connections" Support Group (September 8, 22)
7. Cocoon House Way OUT Parent/Teen Seminar (September 10, 24)
8. Hoarding Task Force (September 12)
9. Evergreen Bereavement Informational Workshop (September 14)
10. YWCA Managing Difficult Emotions Support Group (September 19 – November 7)\*

**\* = Grant/Program Funded Partner**

# August 2016 Marketing Report

## South County Walks

- We are in the last week of the walks, with a typical range of 6-25 participants per walk.
- On Tuesday, July 26, the Edmonds walk had 40+ walkers, with a group of students from the UW Bothell's nursing program participating in the walk.
- Proliance Surgeons has agreed to donate the Fitbit prize as part of the drawing at the end of the program. With this update, the donors for prizes include: Brooks Outlet, Community Transit, Edmonds Family Medicine, and Proliance Surgeons.

## Coming Events

- **Summer Meals (ongoing) for ages 5-18:** Monday-Thursday through Aug. 25, 10 a.m. – 1 p.m. at Alderwood Community Church and Mill Creek Foursquare Church
- **Back-to-School Health Fair:** Thursday, August 25, 6-9 p.m. at Cedar Valley Community School
- **Edge of Amazing:** Friday, September 9, 8 a.m. – 3 p.m. at Tulalip
- **Ethnic Elder Resource Fair:** Saturday, September 10, 9 a.m. – 1 p.m. at Edmonds Community College
- **Fair on 44<sup>th</sup>:** Saturday, September 10, 10 a.m. – 2 p.m. on 44<sup>th</sup> Ave. W between 188<sup>th</sup> and 194<sup>th</sup>.