



# Verdant Health Commission

## GASB 87 Implementation

---



# Lease Standard Implementation

## **GASB 87 and Implementation Guide 2019-3**

### Leases

- Would treat all leases as financings (no classification of capital v. operating) similar to FASB ASU 2016-02.
- Includes non-cancellable period + periods covered by options to renew if reasonably certain to be exercised.
- Lessee would record an intangible asset (amortized over the shorter of its useful life or lease term) and present value of future lease payments as a liability.
- Lessor would record a lease receivable and deferred inflow of resources for cash received up front + future payments (revenue recognized over lease term in a systematic and rational basis).
- Effective for fiscal years beginning after June 15, 2021.



# Lease Standard Implementation – Nonattest Services

We can provide nonattest services to assist our client with implementation of lease standard.

This could include:

- Entering lease information into selected tool to calculate applicable amounts
- Assisting in answering client questions regarding the requirement of the standards and how they might apply to the client
- Assist in preparation of financial statement disclosures, including calculation of disclosure amounts

Client must take responsibility for and be actively involved in –

- Identifying all potential lease agreements
- Approving all key inputs into the lease calculation (i.e. lease term, discount rate, etc.)
- Performing a detailed review of the outputs of the analysis



# Lease Standard Implementation – Results

7 lessor agreements analyzed

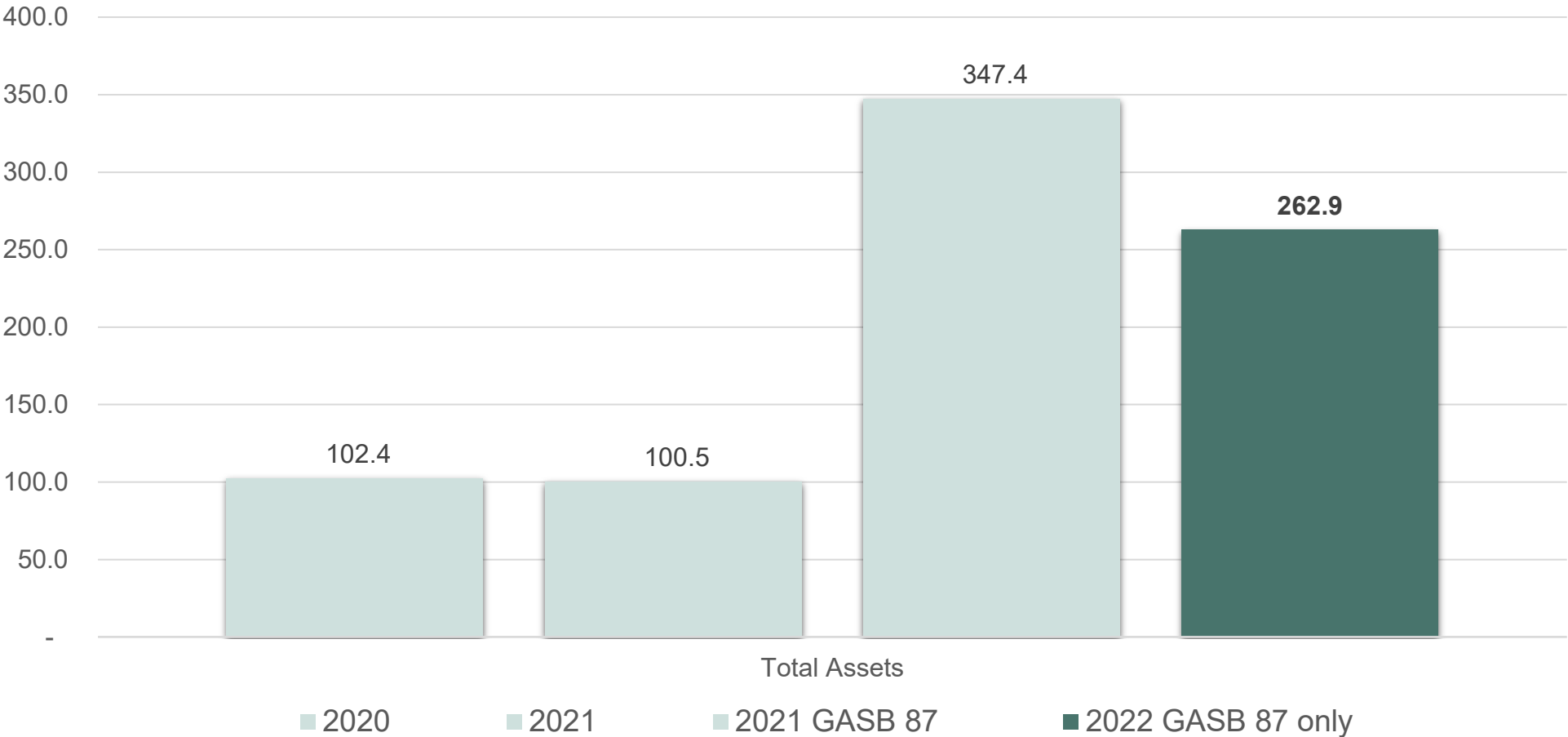
- Swedish Edmonds and Swedish Childrens
- Pavilion Ground lease
- Kruger building Suites (3 leases)
- Kruger Clinic

Key inputs

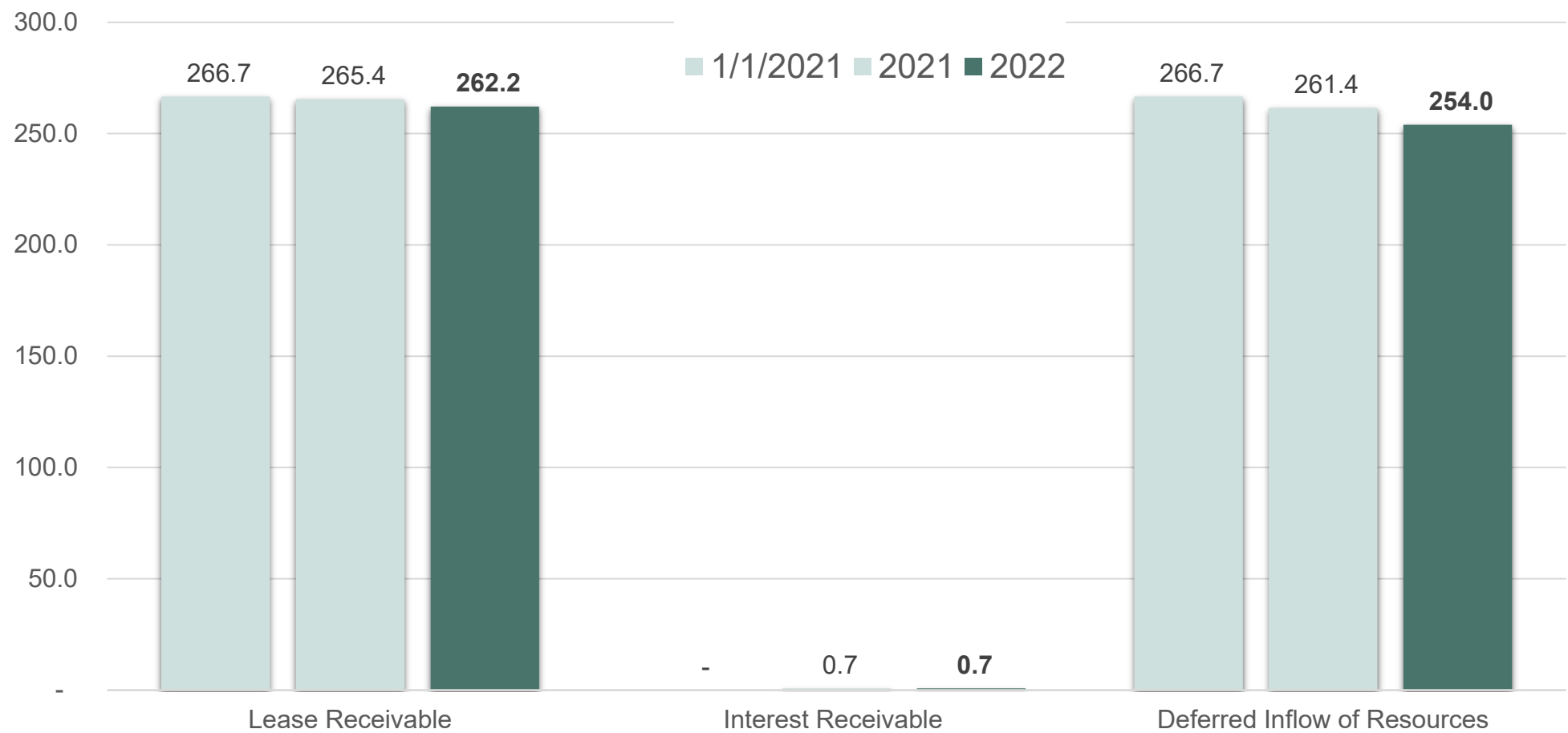
- Lease end dates range from 2024 to 2101
- Implicit discount rate utilized was 3% (i.e. 2012 Bonds)
- Assumption that most available extensions will be executed



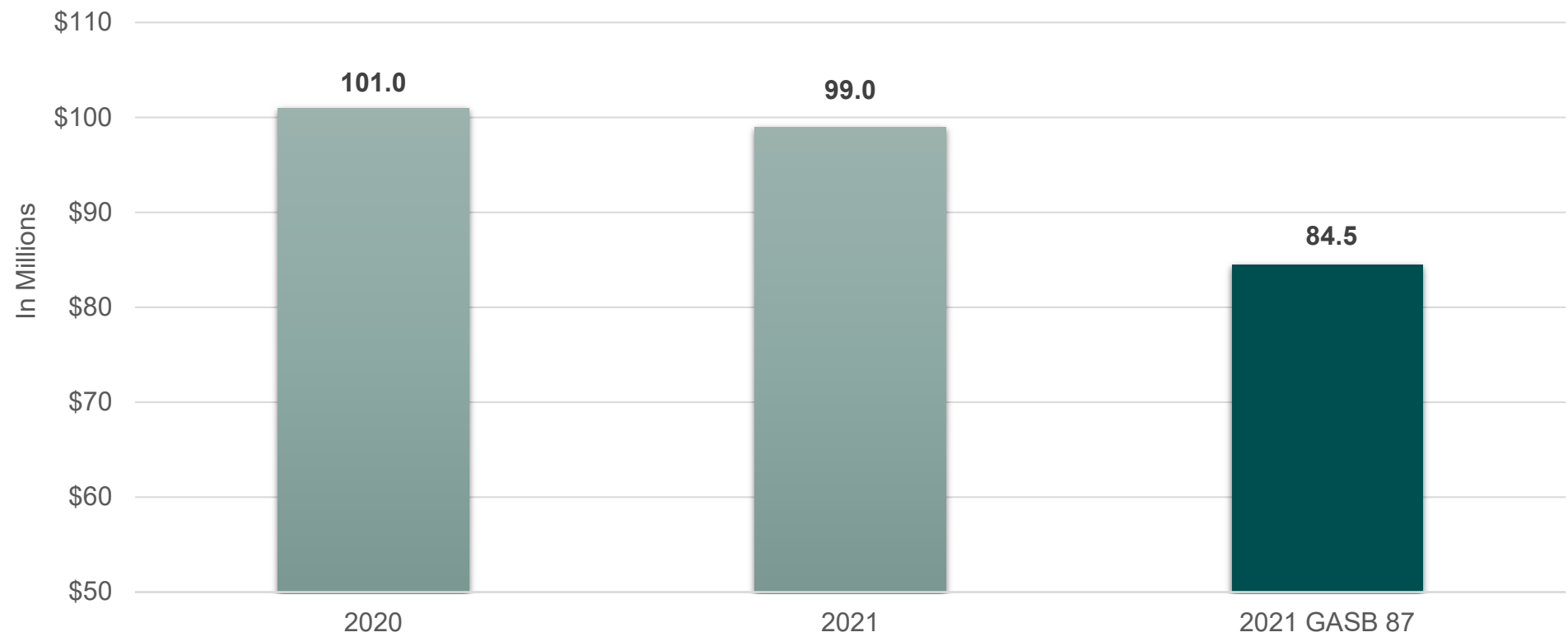
# Asset Totals (in millions)



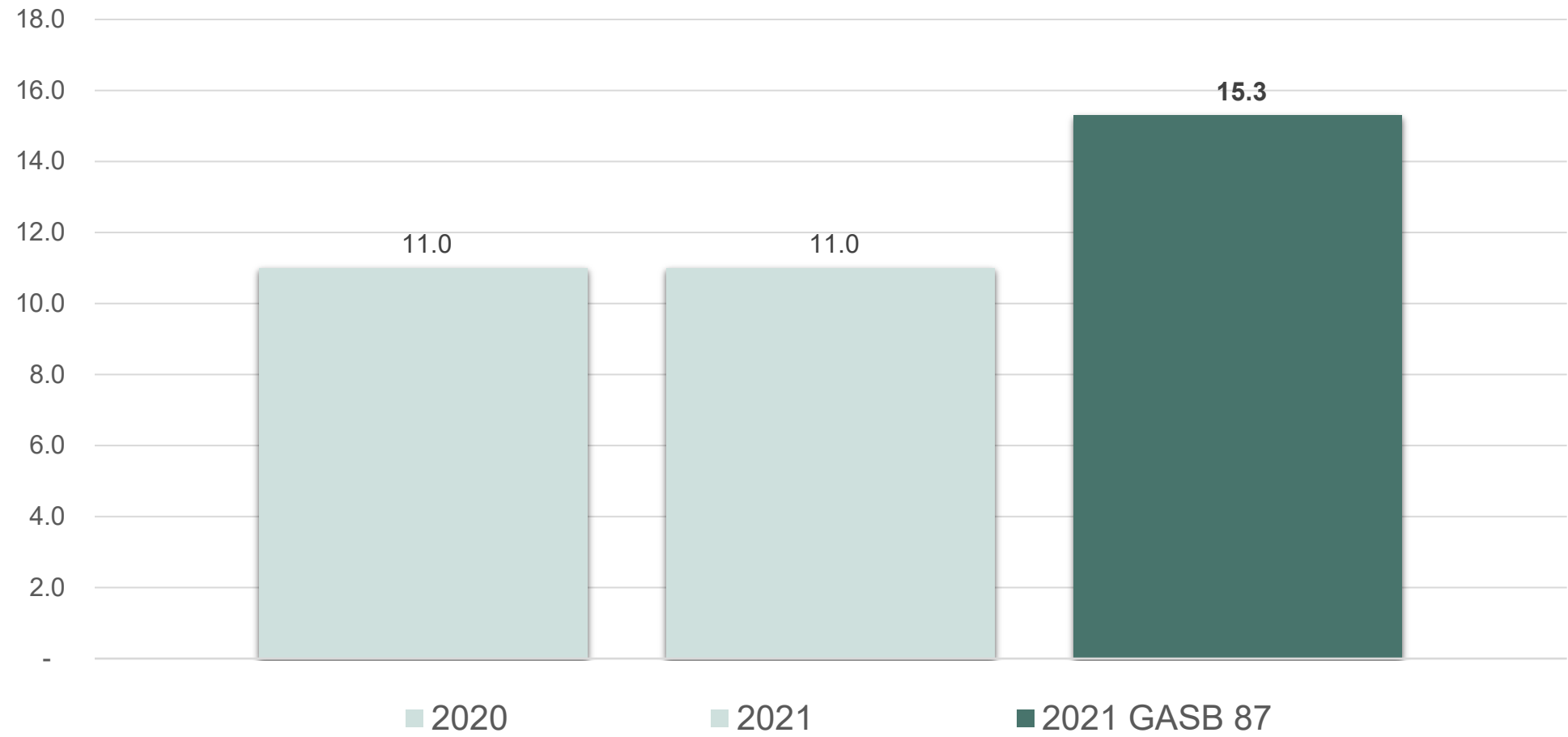
# GASB 87 Breakdown (in millions)



# Net Position (in millions)



# Lease Revenue (in millions)





9

**Matt Stopa, Senior Manager**

mathew.stopa@mossadams.com

(425) 303-3014



THANK  
YOU

PHD#2, Snohomish County  
September 30th, 2022 and December 31, 2021 GASB 87 Proforma  
Statement of Net Position

pg 1 of 2

<b>ASSETS</b>				
	<b>Restated</b>	<b>Restated</b>	<b>As Reported</b>	<b>December 31</b>
	<b>September 30,</b>	<b>December 31,</b>		<b>Change</b>
	<b>2022</b>	<b>2021</b>	<b>2021</b>	
<b>CURRENT ASSETS</b>				
Cash and cash equivalents	\$ 3,374,913	\$ 5,324,633	\$ 5,324,633	-
Investments	54,251,620	53,251,626	53,251,626	-
Prepaid expenses and other	332,669	43,339	43,339	-
Interest receivable	705,434	689,461	-	689,461
Current portion of lease receivable	3,499,249	3,178,290	-	3,178,290
Total current assets	62,163,885	62,487,349	58,619,598	3,867,751
<b>CAPITAL ASSETS</b>				
Nondepreciable capital assets	7,723,706	7,723,706	7,723,706	-
Depreciable capital assets, net of accumulated depreciation	14,328,341	14,888,873	14,888,873	-
Capital assets, net of accumulated depreciation	22,052,047	22,612,579	22,612,579	-
<b>RENT RECEIVABLE</b>	-	-	19,234,605	(19,234,605)
<b>LEASE RECEIVABLE, net of current portion</b>	259,573,892	262,219,002	-	262,219,002
Total assets	\$ 343,789,824	\$ 347,318,930	\$ 100,466,782	246,852,148
<b>LIABILITIES, DEFERRED INFLOWS OF RESOURCES, AND NET POSITION</b>				
<b>CURRENT LIABILITIES</b>				
Accounts and warrants payable	\$ 30,668	\$ 398,252	\$ 398,252	-
Prepaid lease income	1,145,961	904,911	904,911	-
Accrued salaries and benefits	59,917	31,276	31,276	-
Estimated self-insured liabilities	125,269	125,000	125,000	-
Total current liabilities	1,361,815	1,459,439	1,459,439	-
<b>DEFERRED INFLOWS OF RESOURCES</b>				
Deferred lease revenue	255,833,328	261,392,769	-	261,392,769
<b>NET POSITION</b>				
Net investment in capital assets	22,052,047	22,612,579	22,612,579	-
Unrestricted	64,542,634	61,854,143	76,394,764	(14,540,621)
Total net position	86,594,681	84,466,722	99,007,343	(14,540,621)
Total liabilities and net position	\$ 343,789,824	\$ 347,318,930	\$ 100,466,782	246,852,148

PHD#2, Snohomish County  
September 30th, 2022 and December 31, 2021 GASB 87 Proforma  
Statement of Revenue, Expenses and Changes in Net Position

pg 2 of 2

	Years Ended December 31,		Change
	Restated 2021	As reported 2021	
OPERATING REVENUES			
Lease revenue	\$ 8,312,918	\$ 11,596,958	-3,284,040
Interest revenue	7,978,024	-	7,978,024
Other operating revenue	95,843	95,843	
Total operating revenues	16,386,785	11,692,801	4,693,984
OPERATING EXPENSES			
Salaries and wages	924,176	924,176	-
Employee benefits	160,615	160,615	-
Program expenditures	11,559,753	11,559,753	-
Professional services	618,749	618,749	-
Purchased services, utilities, and other	1,167,570	1,167,570	-
Depreciation	1,375,092	1,375,092	-
Total operating expenses	15,805,955	15,805,955	-
Operating loss	580,830	(4,113,154)	4,693,984
NONOPERATING REVENUES (EXPENSES)			
Maintenance and operations tax levy	2,466,426	2,466,426	-
Investment income and net unrealized/realized (loss) gain	(314,461)	(314,461)	-
Other interest expense and amortization	-	-	-
Other revenues (expenses)	(34,923)	(34,923)	-
Net nonoperating revenues	2,117,042	2,117,042	-
Change in net position	2,697,872	(1,996,112)	4,693,984
NET POSITION, beginning of year	81,768,850	101,003,455	-19,234,605
NET POSITION, end of year	\$ 84,466,722	\$ 99,007,343	-14,540,621

- -

**Balance Sheet**  
**As of December 31, 2021 and October 31, 2022**

	Dec 31, 2021	October 31, 2022	\$ Change	Comments:
<b>ASSETS</b>				
<b>Current Assets</b>				
1 Cash Balance	3,206,323	3,515,217	308,894	
2 Accounts Receivable	(58,972)	46,917	105,889	
3 Other Current Assets	-	-	-	
4 Paychex Tax Clearing		(161)		
5 Investments	55,369,936	53,685,305	(1,684,631)	Payden and Rygel/US Bank Custodial-YTD unrealized loss on portfolio (\$1.956MM)
6 Prepaid Expenses & Others	66,516	76,288	9,772	Prepaid Insurances, Other Prepaid Expenses
7 M&O Tax Levy Receivable	35,795	682,182	646,387	10 months x \$207k less payments received to date
8 Subtotal Other Current Assets	55,472,247	54,443,614	(1,028,633)	
9 Total Current Assets	58,619,598	58,005,748	(613,850)	
10 Fixed Assets-Net of Depreciation	22,612,579	21,947,479	(665,100)	Hosp, Kruger, VCWC, VV, Pavilion FA; Additions 2022: Roofing \$310k and Ductwork Replacement \$80k for Kruger in FA at 9/30/22
11 Other Assets	19,234,604	19,130,834	(103,769)	Deferred Rent-Pavillion, Hospital, Clinic & TI Allowances
Total Assets	100,466,781	99,084,062	(1,382,719)	
<b>LIABILITIES &amp; NET POSITION</b>				
<b>Liabilities</b>				
<b>Current Liabilities</b>				
12 Accounts Payable	234,537	92,109	(142,427)	10/31/22 Accounts Payable \$71k; Unclaimed Property \$21k.
13 Credit Cards	(674)	(1,439)	(765)	
<b>Other Current Liabilities</b>				
14 Tenant Prepaid Rents	904,910	955,463	50,553	Swedish Hospital and Clinics Nov rents paid at month end October
15 Other Payables & Accruals	164,359	176,580	12,221	Business Taxes, Accrued Operating Expenses, Tenant Security Deposits
16 Accrued Salary & Benefits	30,221	58,105	27,884	11 business days in accrual at 10/31/2022
17 Estimated Self-Insured Reserve	126,084	125,269	(815)	Contingency reserve for self funded L&I set at \$125k. Only 2 active claims remain open. Under review with Eberle Vivian.
18 Subtotal Other Current Liabilities	1,225,574	1,315,417	89,843	
19 Total Liabilities	1,459,437	1,406,088	(53,350)	
20 Equity	99,007,344	97,677,974	(1,329,370)	Change = CY22 YTD Net Income (Loss) through 10/31/2022 (1,329,369)
Total Liabilities and Equity	100,466,781	99,084,062	(1,382,720)	

**Statement of Income-Actual**  
**Months Ending Sept 30th and Oct 31, 2022**

	Month of Sept 2022	Month of Oct 2022	Month Change Inc/(dec)	Comments:
<b>1 Operating Revenue</b>				
<b>2</b> Lease Revenues (Base, CAM, Taxes)	998,223	998,223	-	Hospital 3% rent increased 9/1/22
<b>3</b> Deferred Rent Adjustments	(3,684)	(3,684)		
Class Registration & Other	30	-		
<b>4</b> Grant Repayments	21,927	184,274	162,347	Univ of WA repayment Grant A446 Sept- \$22k-Edmonds School District Move 60 2021 Grant Repayment Oct \$184k
<b>5 Total Operating Revenue</b>	<b>1,016,496</b>	<b>1,178,814</b>	<b>162,347</b>	
<b>6 Program Funding and Operating Expenses</b>				
<b>7 Programs</b>				
<b>8 Total Program Funding</b>	<b>715,035</b>	<b>898,697</b>	<b>183,661</b>	Includes All Program Payments, External; Multiyear, BHC, Covid, VOA, CHART, SD, and Internal Program Expenses.
<b>9 Operating Expenses</b>				
<b>10</b> Salaries, Benefits & Contracted Staff	89,746	99,059	9,313	Contracted staff for grants included here
<b>11</b> Professional Development/Planning	1,732	73	(1,659)	
<b>12</b> Professional Services	92,038	58,069	(33,970)	Sept includes Coast Project Management \$22k for Roof, HVAC and Ductwork PM. Plus one appraisal fee of \$3500. (Note: PM fees w/b capitalized to project on balance sheet). October includes Thomas consulting, accounting, IT, legal and investment at regular recurring rates.
<b>13</b> Purchased Services	53,224	23,029	(30,195)	
<b>14</b> Supplies, Postage & Other	(6,898)	10,779	17,677	
<b>15</b> Repairs, Maintenance & Insurance	30,235	15,285	(14,950)	
<b>16</b> Utilities	15,710	15,724	14	
<b>17</b> Business Taxes	7,120	17,087	9,968	Increase due to adjustment to leasehold taxes--must be applied to CAM not just base
<b>18</b> Marketing	439	1,061	621	
<b>19</b> Depreciation	106,210	104,567	(1,643)	
<b>20</b> Amortization	7,424	2,311	(5,113)	Decrease due to Children's clinic fully amortized in June 2022
<b>21 Total Operating Expenses</b>	<b>396,980</b>	<b>347,043</b>	<b>(49,937)</b>	
<b>22 Total Program and Operating Expenses</b>	<b>1,112,015</b>	<b>1,245,740</b>	<b>133,725</b>	
<b>23 Net Operating Income (Loss)</b>	<b>(95,519)</b>	<b>(66,927)</b>	<b>28,622</b>	<b>Net Operating (Loss)</b> Month of October (\$66,927)
<b>24 Other Income (Expense)</b>	-	-		
Interest expense		(34)		
<b>25 Self Funded L&amp;I Expenses</b>				
<b>26</b> Stevens Hosp Self Funded L&I Expenses	(14,432)	(6,031)	8,400	
<b>27 Levy and Other Non Operating Income</b>				
<b>28</b> Other Income	-	-	-	
<b>29</b> Levy Income	208,763	207,028	(1,735)	
<b>30 Net Income (Loss) after Levy Income</b>	<b>98,813</b>	<b>134,037</b>	<b>35,288</b>	<b>Net Income after Levy \$134,037</b>
<b>31</b> Investment Income-Net of Unrealized Gains (Losses)	(348,804)	(46,674)	302,130	October Month: Interest Income \$38k, Realized Gain \$1k; Unrealized Loss (\$84k)
<b>32 Net Income (Loss)</b>	<b>(249,991)</b>	<b>87,363</b>	<b>337,418</b>	<b>Net Income</b> Month of October \$87,363

**Statement of Income-Actual v Budget  
Month and YTD Ending October 31, 2022**

	Month of Oct 22 Actual	Month of Oct 22 Budget	Month Fav/(Unfav) Variance		YTD Oct 22 Actual	YTD Oct 22 Budget	YTD Fav/(Unfav) Variance		22 Full Year Budget	% of Budget incurred	\$ Budget Remaining Nov- Dec 22
1 <b>Income</b>											
2 <b>Operating Revenue-Net of Deferred Rent Adjustments</b>	1,178,814	967,611	211,203	F	10,108,364	9,676,107	432,257	F	11,611,328	87.1%	
3 <b>Expenses</b>											
4 Program Expenses-All Categories	898,697	871,595	(27,101)	U	8,127,876	8,715,954	588,078	F	10,459,145	77.7%	2,331,269
5 Operating Expenses	240,164	211,104	(29,060)	U	2,510,074	2,111,197	(398,877)	U	2,533,405	99.1%	23,331
6 Depreciation & Amortization	106,879	120,098	13,219	F	1,144,894	1,200,976	56,082	F	1,441,171	79.4%	296,277
7 <b>Total Expenses</b>	1,245,740	1,202,798	(42,942)	U	11,782,844	12,028,127	245,283	F	14,433,721	81.6%	2,650,877
8 <b>Operating Income (Loss)</b>	(66,926)	(235,187)	168,260	F	(1,674,480)	(2,352,020)	677,540	F	(2,822,393)		
9 <b>Other Income (Expense)</b>											
Misc	(34)										
10 Self Funded L&I Expenses	(6,031)		(6,031)	U	(48,774)		(48,774)	U	-		
11 <b>Levy and Other Non Operating Income</b>											
Misc Income		417	(417)	U	7,982	4,167	3,815	F	5,000		
13 Levy Income	207,028	210,000	(2,972)	U	2,070,534	2,100,000	(29,466)	U	2,520,000		
14 <b>Net Income (Loss) After Levy Income</b>	134,037	(24,770)	158,807	F	355,261	(247,854)	603,115		(297,393)		
15 Investment Income-Net of Unrealized Gains (Losses)	(46,674)	25,000	(71,674)	U	(1,684,631)	250,000	(1,934,631)	U	300,000		
16 <b>Net Income (Loss)</b>	87,363	230	87,133	F	(1,329,370)	2,146	(1,331,516)	U	2,607		

**Revenues:**

**Rental Income**-September Hospital Lease revenue increase 3% or \$25k. Revenue is trending ahead of budget primarily due to CAM revenue updates and 2021 grant repayments totaling \$206k. Kruger Tenant CAM at 2021 expenses were billed in June~\$54K. 2022 Catch up CAM's in the amount of ~\$130k were billed in July, both increase top line revenue and offset the property operating expenses paid by Verdant. Two suites are st reduces the amount of base rent and CAM that can be recovered from tenants. (Est is \$100K rent and \$65K in CAM for 2022). Estimates for minor refresh to better market suites is pending and has been assumed by nev managers. (#110; 2025 SF & 270; 497 SF). Unbudgeted Value Village ground space lease began at June 1, \$2K per month and is expected to end 12/31/2022.

**Investment Income-Month of October**-Interest income \$38k; Realized Gain \$1k; Unrealized Loss (\$84k)

**Investment Income-Year to Date** -Interest income \$381k; Realized Loss (\$109k); Unrealized Loss (\$1.95MM) \*Market adjustments are not budgeted

Refer to Q-3 2022 report from Payden and Rygel regarding drivers to unrealized losses.

**Expenses:****Program Funding/Expenses-**

**External Programs YTD-Community Grants** \$7.3MM of \$9MM budgeted, 82% of full year, **BHC** \$108k of \$418k budgeted, 27% of full year budget, no additional spending planned in this category. **Covid** \$349k of \$500 year budget. 3 additional payments in November totaling \$53k will close all applications received to date. **CHART** \$59k of \$101k budgeted---Contract is 2021/2022 year and renewal to 2023/2024 has just been approved. of \$110k budgeted,\*VOA includes 211 program of \$55k and Training/Coaching Facilitation of \$16.5k covered by the VOA underspend from 2021 (see revenue line). **Superintendent Discretionary** \$47K of \$100k budget

**Internal programs;** \$101k of \$230k budgeted or 44% of full year budget. 10/12th or 83% through calendar year

**All Programs**-\$8.127MM of \$10.459M budgeted or 78% of full year budget.

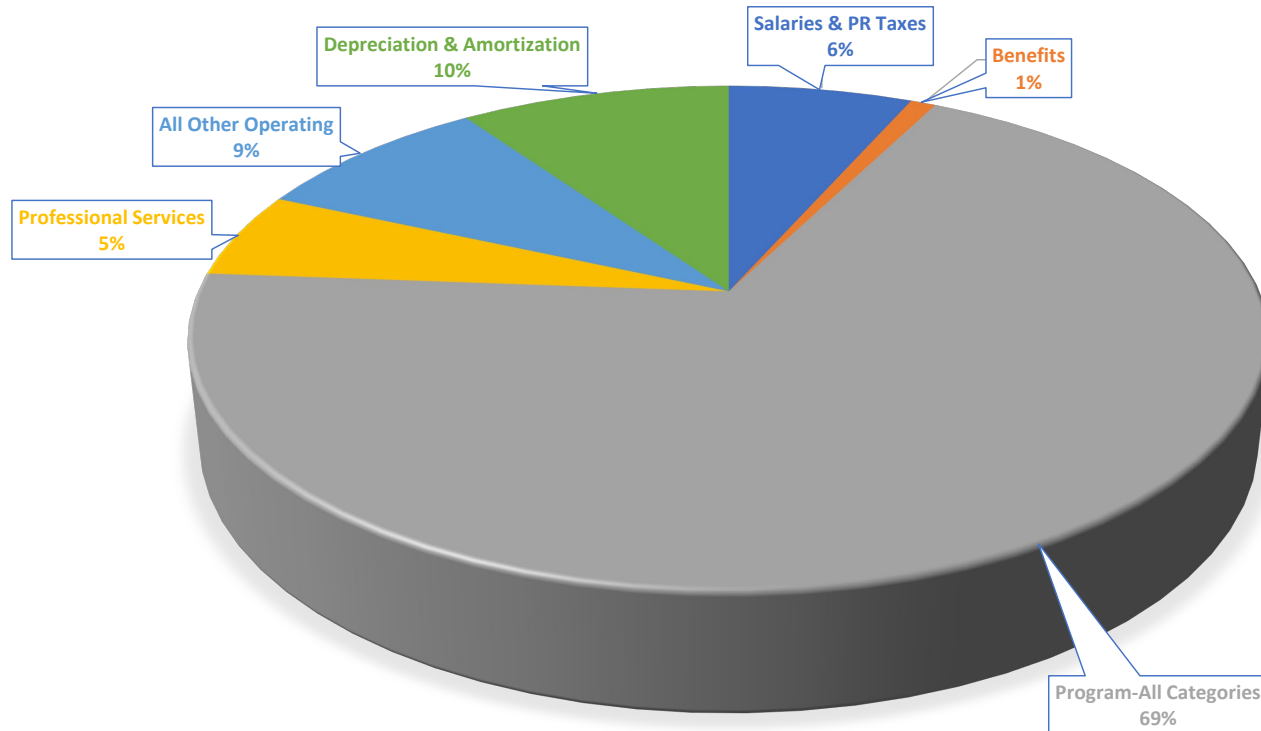
**Operating Expenses-**

Negative budget variance continues and operating expenses are expected to close the year over budget. This is due to multiple categories but primarily overages in repairs and maintenance\*, security services (Kruger CI professional services including accounting support, legal, property management, project management, and appraisal costs not previously budgeted. Security was budgeted at only \$10k for 2022, at October 2022, the act \$207k. Although unbudgeted, security costs are a billable CAM expense and offset by CAM revenue as billed to tenants. Property management fees were under budgeted by approximately 50%, the fees are not in exces amount, the 2022 budget was underestimated. Additional legal and consulting fees related to the Hospital incurred to date: ~\$15K with an additional \$12k to land in November (PR and Thomas)

Helping to mitigate operating expense variances are increases in interest income and 2021 grant award repayments at \$245k Furthermore the BHC will not be expended saving \$310K.

\*The large ductwork replacement of \$80K and roof replacement \$310K are capital expenditures and do not flow through the P&L as repairs and maintenance when incurred but will be depreciated annually.

# PUBLIC HOSPITAL DISTRICT #2 OF SNOHOMISH COUNTY OPEX BY CATEGORY VIEW 1 10.31.22



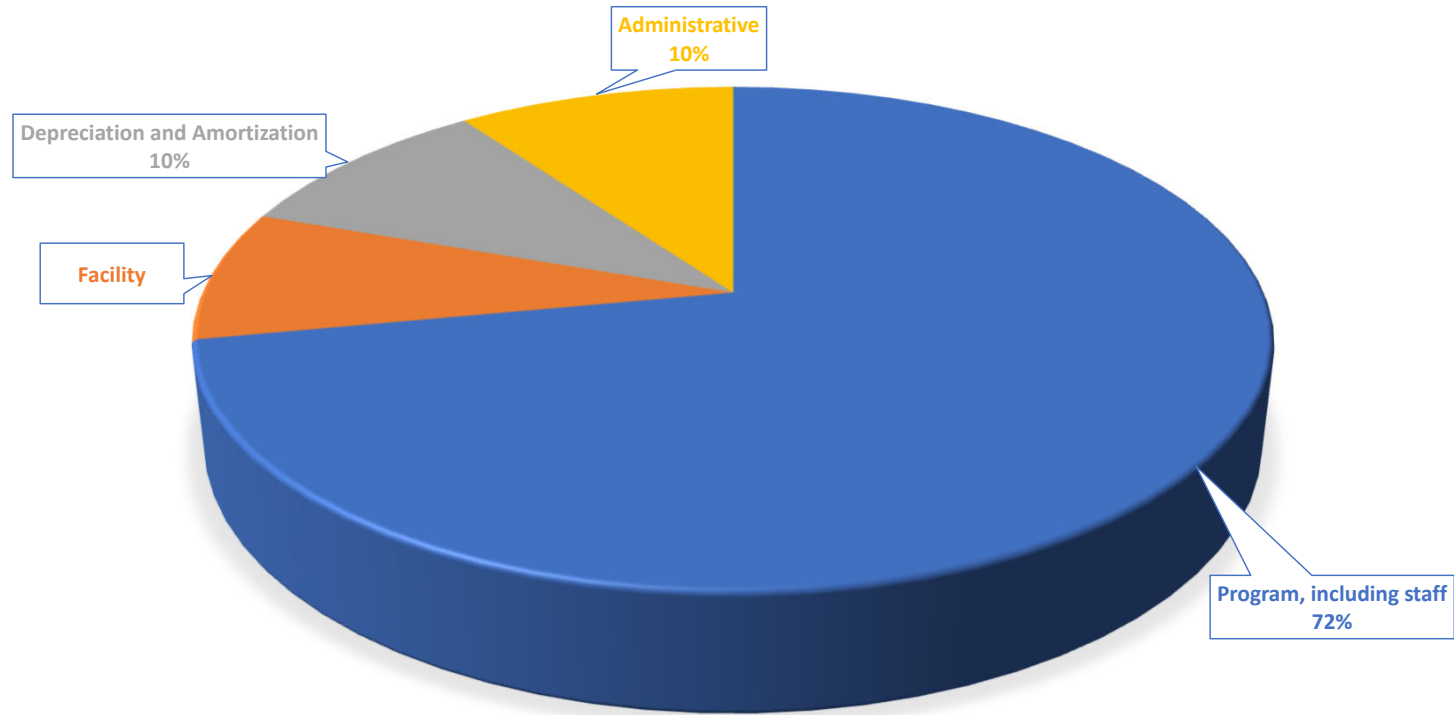
View 1 Categories expressed as a percentage of total expenses, including depreciation and amortization

Professional Services include-Legal, Accounting and Audit, Investment Management, HR Services, IT Services, Special Consulting Projects (DEI, Planning etc.)

All other Operating expenses include-Repairs and all property related maintenance expenses, utilities, insurances, business taxes, supplies, marketing and other administrative costs.

- A. Month to month % fluctuations will occur based on quarterly awards, payout schedules and natural variations in expense billings.
- B. Prior to March 2022 all other operating expenses were excluded from this analysis; These expenses are now included.
- C. 10.22 presentation added depreciation expense to analysis

PUBLIC HOSPITAL DISTRICT #2 OF SNOHOMISH COUNTY OPEX BY CATEGORY VIEW 2 10.31.22



View 2-Categories expressed as a percentage of total expenses including depreciation

Facility Expenses Include: Utilities, Repairs, Maintenance, Insurance, Taxes, Property Management and Real Estate related costs, allocation of legal and certain other professional fees.

Program Costs Include: All grants and internal program costs plus Salaries and Benefits for direct program staff 4.75 FTE

Administrative Costs Include-Remaining staff salaries and benefits; supplies, marketing, legal, investment services, accounting and other professional services self insured L&I costs

## Public Hospital District #2, Snohomish County dba

## Verdant Health Commission

## Warrants Month of October 2022

Type	Date	Num	Name	Amount	Memo
Wells Fargo Warrant Acct *2717					
Check	10/03/2022	15788	G - Hand in Hand	15,000.00	C-S526 Outreach Base Need GJE, RGJE created on 10/20/2022
General Journal	10/03/2022	15788R	G - Hand in Hand	-15,000.00	Hand in Hand Ck #15788 rejected due to no Positive Pay
ACH	10/06/2022	ACH	Regence Blueshield	7,046.36	Oct health insurance
Check	10/13/2022	15789	Allstream	72.29	Value Village phone system
Check	10/13/2022	15790	Armstrong Services	1,280.00	Service contract for Oct 2022
Check	10/13/2022	15791	BBG, Inc.	3,200.00	Value Village Appraisal
Check	10/13/2022	15792	Carney Badley Spellman	2,364.50	Legal services re: Commissioner's meeting Aug 11 and 12
Check	10/13/2022	15793	Christy Goff Nutrition	434.00	Heart Healthy Cooking Demo
Check	10/13/2022	15794	City Center Apartment Lynnwood Partners	84.56	J. Stevenson Oct rent short
Check	10/13/2022	15795	Coast Property Management	1,750.00	Sept prop mgmt fee for Verdant and Value Village
Check	10/13/2022	15796	Comcast - Acct # 8498310221378586	316.37	Acct # 8498310221378586
Check	10/13/2022	15797	Consolidated Landscape Maintenance, Inc.	458.94	Maintenance for Oct 2022
Check	10/13/2022	15798	Dolores Reyes.	240.00	Parent Summit Presenter 2022
Check	10/13/2022	15799	Dynamic Computing, Inc.	5,801.13	IT service for Sept 2022
Check	10/13/2022	15800	Eberle Vivian	329.19	4th Qtr balance after credit issued for overbilling 3rd qtr
Check	10/13/2022	15801	ELTEC Systems, LLC	320.19	Elevator maintenance Sept 2022
Check	10/13/2022	15802	Kristen Barrantte	387.50	Award CP-22-04 Community Perspective Survey - VOA
Check	10/13/2022	15803	Liliana Uribe	240.00	Parent Summit presenter 2022
Check	10/13/2022	15804	McKinstry Co., LLC	1,313.65	Preventive Maintenance per agreement
Check	10/13/2022	15805	Nohemi Rivera	240.00	Parent Summit Presenter 2022
Check	10/13/2022	15806	Payden & Rygel	9,013.00	Investment advisory svc for Sept 22
Check	10/13/2022	15807	Puget Sound Energy	54.07	Verdant (gas) 8/24-9/22
Check	10/13/2022	15808	Robert Half	5,801.25	Fajardo for wk ending 9/23 and 9/30
Check	10/13/2022	15809	Sistema Escolar USA	240.00	Parent Summit presenter 2022
Check	10/13/2022	15810	Snohomish County Treasurer		VOID: 2022 Property Tax Parcel #00372600600504
Check	10/13/2022	15811	Sound Dietitians LLC	1,936.99	Nutrition programing and food purchase
Check	10/13/2022	15812	Sound Publishing, Inc.	76.44	Ad on Everett Daily Herald
Check	10/13/2022	15813	The Extra Step, LLC	8,762.27	Award CSW-16 - 1 month extension
Check	10/13/2022	15814	Turner HR Services, Inc.	875.00	HR consulting for Sept 2022
Check	10/13/2022	15815	Velia Cervantes Lara	240.00	Parent Summit presenter 2022
Check	10/13/2022	15816	Waste Management	578.93	Sept charge for refuse removal and containers
Check	10/13/2022	15817	Snohomish County Treasurer		VOID: 2022 Property Tax Parcel #00372600600504
Check	10/13/2022	15818	Snohomish County Treasurer		VOID: 2022 Property Tax Parcel #00372600600504
Check	10/19/2022	15819	Wells Fargo		VOID:
Check	10/20/2022	15820	Comcast - Acct # 905447969	572.99	905447969
Check	10/20/2022	15821	Dr. Brian Takagi		VOID: Return Security Deposit

## Public Hospital District #2, Snohomish County dba

## Verdant Health Commission

## Warrants Month of October 2022

Type	Date	Num	Name	Amount	Memo
Check	10/20/2022	15822	Foster Garvey PC	11,641.00	July and Aug 2022 legal service
Check	10/20/2022	15823	Lynnwood Chamber of Commerce	284.00	2022 chamber membership
Check	10/20/2022	15824	Nicole Lyon	517.84	Oct hybrid cooking show
Check	10/20/2022	15825	Robert Half	7,371.00	Fajardo wk 10/07/22 and wk 10/14/22
General Journal	10/26/2022	15825R	Robert Half	-7,371.00	Bank reversed ck #15825 Positivie pay incorrect
Check	10/20/2022	15826	Thomas & Associates Consulting, LLC	2,850.00	Oct 2021 invoice - for service on Aug 2021
Check	10/20/2022	15827	Verizon	142.73	Lisa's cell phone
Check	10/27/2022	15833	Ana Evelin Garcia	500.00	Contract # MC 1017 - Women's Support Group
Check	10/27/2022	15834	Canon Financial Services, Inc.	575.70	Konica copier maintenance
Check	10/27/2022	15835	ELTEC Systems, LLC	1,853.17	Heat detector testing
Check	10/27/2022	15836	Guardian Security Systems, Inc.	464.02	Service call Ticket #131933
Check	10/27/2022	15837	Lease Crunch	350.00	Subscription Aug 01/22 - Jul 31/23 (7 units)
Check	10/27/2022	15838	Quadient Finance USA Inc.	90.00	Sept postage orders
Check	10/27/2022	15839	Seattle Food Nut	489.23	10/19/2022 Hybrid cooking demo - 1 pot dinner
Check	10/27/2022	15840	Staples	764.21	paper, file folders, pens and highlighters
Check	10/27/2022	15841	Wells Fargo		VOID: 4 credit card payments
Check	10/27/2022	15841x	Wells Fargo	3,029.55	KM- Sept/Oct CC Statement
Check	10/27/2022	15828	Void		printing on both sides-
Check	10/27/2022	15829	Void		printing on both sides-
Check	10/27/2022	15830	Void		printing on both sides-
Check	10/27/2022	15831	Void		printing on both sides-
Check	10/27/2022	15832	Void		printing on both sides-
Check	10/27/2022	15842	Collins Junction	200.00	Rental deposit for J. Racette
Check	10/28/2022	15843	Snohomish County Treasurer	679.73	2022 Property Tax Parcel #00372600600504
		15844-15849	November checks		out of sequence
Check	10/31/2022	15850	G - UTSAV	2,000.00	C-S500 Community Perspectives Survey-replacement for May 22
<b>Wells Fargo Warrant Acct *2717</b>				<b>80,460.80</b>	check stop payment

**Wells Fargo Property Management \*7265**

Check	10/20/2022	1500	Dr. Brian Takagi		VOID: paper jam
Check	10/24/2022	1501	Dr. Brian Takagi		VOID: paper jam
Check	10/31/2022	1502	Dr. Brian Takagi	500.00	Refunding Security Deposit
Check	10/01/2022	C1252	Aardvark Services Corp.	96.43	Parking lot sweeper Sept 22
ACH	10/20/2022	ACH	Superior Press, Inc.	242.73	Check stock
Check	10/21/2022	J101	Armstrong Services	8,628.00	Janitorial contract for Oct 2022
Check	10/21/2022	J102	Camden Gardens, Inc.	2,556.38	Kruger monthly maintenance
Check	10/21/2022	J103	Comcast - Acct # 933676367	763.64	Internet service
Check	10/21/2022	J104	Commercial Property Maintenance, Inc.	4,290.51	Multiple invoice - maintenance/repairs
Check	10/21/2022	J105	Consolidated Landscape Maintenance, Inc.	458.94	Landscape at Verdant

## Public Hospital District #2, Snohomish County dba

## Verdant Health Commission

## Warrants Month of October 2022

Type	Date	Num	Name	Amount	Memo
Check	10/21/2022	J106	JSH Properties Inc	1,900.00	Sept 22 mgmt fee
Check	10/21/2022	J107	McKinstry Co., LLC	1,194.51	2022 annual contract - backflow testing
Check	10/21/2022	J108	Snohomish County PUD	13,573.54	Electricity for Verdant and Kruger
Check	10/21/2022	J109	Allied Univ Security Srv	8,056.82	9/16-9/29 security patrol
Check	10/21/2022	J110	Western Exterminator Company	672.00	Exterminator from May, Sept and Oct 2022
Check	10/21/2022	J111	Ziply Fiber	57.86	communication svc
Check	10/21/2022	J112	Armstrong Services	1,280.00	Janitorial service for Oct 2022
<b>Total Wells Fargo Property Management Acct *7265</b>				<b>44,271.36</b>	<b>B</b>
<b>Wells Fargo Work Comp Acct *2725</b>					
Check	10/01/2022	305539	RXBRIDGE	88.82	Prescriptions
Check	10/04/2022	305540	The Ability Center	2,075.33	Medical Supplies
Check	10/04/2022	305541	Patient	1,000.00	Medical Supplies
Check	10/04/2022	305542	RXBRIDGE	367.16	Prescriptions
<b>Wells Fargo Work Comp Acct *2725</b>				<b>3,531.31</b>	<b>C</b>
<b>Total Warrant Payments</b>				<b>128,263.47</b>	<b>A-C</b>

Public Hospital District #2 Snohomish County dba Verdant Health Commission  
Electronic Disbursements and Summary October 2022

	Type	Date	Num	Name	Amount	Memo
<b>Wells Fargo Operating Acct *2709</b>						
2709	<b>ACH Program Payments</b>					
	ACH	10/14/2022	ACH Gmt841	G - American Heart Association	4,466.51	Award A510 Snohomish County
	ACH	10/14/2022	ACH Gmt842	G - Boys & Girls Club of Sno County	8,333.33	Award 484 Behavioral Health Uplift initiative
	ACH	10/14/2022	ACH Gmt843	G - Cancer Lifeline	6,650.00	Award A531 Whole Patient Services
	ACH	10/14/2022	ACH Gmt844	G - Cascade Bicycle Club Ed Foundation	4,166.66	Award A434 Let's Go Edmonds 2022
	ACH	10/14/2022	ACH Gmt845	G - Cascade Swim Club	2,400.00	Award A509 Yost Pool Drowning Prevention Program 2022
	ACH	10/14/2022	ACH Gmt846	G - Center for Human Services	8,532.75	Award 352 Behavioral Health Integration Program at VM/EFM 2020-23
	ACH	10/14/2022	ACH Gmt847	G - Center for Human Services	5,969.25	Award 356 Behavioral Health integration program at CHC 2020-23
	ACH	10/14/2022	ACH Gmt848	G - Center for Human Services	29,167.00	Award A523 Youth Counseling Yr 2
	ACH	10/14/2022	ACH Gmt849	G - ChildStrive	25,497.00	Award 348 Nurse Family Partnership 2020 - 22
	ACH	10/14/2022	ACH Gmt850	G - ChildStrive	28,855.00	Award A490 Early Intervention Yr 2
	ACH	10/14/2022	ACH Gmt851	G - Cocoon House	12,500.00	Award A517 Host Homes Yr 2
	ACH	10/14/2022	ACH Gmt852	G - Compass Health	27,176.00	Award A472 Community Response Initiative
	ACH	10/14/2022	ACH Gmt853	G - Compass Health	2,475.00	Award A495 Emergency Motel Voucher Yr2
	ACH	10/14/2022	ACH Gmt854	G - Concern for Neighbors Food Bank	1,250.00	Award A513 Supplementary Food Prurchase
	ACH	10/14/2022	ACH Gmt855	G - Domestic Violence Services Sno Co	35,000.00	Award A531 Education Outreach and Prevention Program
	ACH	10/14/2022	ACH Gmt856	G - Domestic Violence Services Sno Co	8,000.00	Award A477 Community Advocacy Program
	ACH	10/14/2022	ACH Gmt857	G - Edmonds College Foundation	4,167.00	Award A473 Edmonds College Food Security Program
	ACH	10/14/2022	ACH Gmt858	G - Edmonds College Foundation	20,052.00	Award A516 Expansion Project Yr2
	ACH	10/14/2022	ACH Gmt859	G - Edmonds Food Bank	3,325.00	Award A489 It Tastes Like Home (Culturally Relevant Food)
	ACH	10/14/2022	ACH Gmt860	G - Edmonds School Dist No. 15	37,500.00	Award 349 Student Support Advocate 2020-22
	ACH	10/14/2022	ACH Gmt861	G - Edmonds School Dist No. 15	32,336.00	Award A511 Move 60! 2022-2023 Yr3
	ACH	10/14/2022	ACH Gmt862	G - Edmonds School Dist No. 15	16,667.00	Award A522 Family Resource Advocates Yr2
	ACH	10/14/2022	ACH Gmt863	G - Edmonds Senior Center	9,667.00	Award A475 Enhancing Health and Wellness
	ACH	10/14/2022	ACH Gmt864	G - Helping Hands Project Org	4,333.00	Award A470 Rapid Food Assistance Program
	ACH	10/14/2022	ACH Gmt865	G - Homage Senior Services	27,027.00	Award A474 Center for Healthy Living
	ACH	10/14/2022	ACH Gmt866	G - Homage Senior Services	12,326.58	Award 346 Care Coordination - South Snohomish County 2020-22
	ACH	10/14/2022	ACH Gmt867	G - Interfaith Family Shelter	833.00	Award A483 Homelessness Prevention Yr 2
	ACH	10/14/2022	ACH Gmt868	G - Kinderling	14,583.33	Award A487 Early Intervention Yr2
	ACH	10/14/2022	ACH Gmt869	G - Korean Community Serv. Ctr	8,625.00	Award A536 Mind Body and Soul for Korean Americans Yr 2
	ACH	10/14/2022	ACH Gmt870	G - Korean Women's Assn	12,184.33	Award A491 Everyday Prevention and Senior Nutrition
	ACH	10/14/2022	ACH Gmt871	G - Lahai Health	32,917.00	Award A520 Dental Program yr2
	ACH	10/14/2022	ACH Gmt872	G - Lahai Health	15,666.66	Award 350 Mobile Medical Clinic Program 2020-22
	ACH	10/14/2022	ACH Gmt873	G - Lahai Health	6,633.33	Award A441 Mental Health Program
	ACH	10/14/2022	ACH Gmt874	G - Latino Educ Training Inst	4,167.00	Award A476 LETI Cafe
	ACH	10/14/2022	ACH Gmt875	G - Latino Educ Training Inst	11,000.00	Award A382 Health and Wellness Advocate Program
	ACH	10/14/2022	ACH Gmt876	G - Latino Educ Training Inst	7,400.00	Award A519 Promotora Program Yr 2
	ACH	10/14/2022	ACH Gmt877	G - Lynnwood Food Bank	4,333.00	Award C-S388 COVID 19 Resposne Food Deliverty Program
	ACH	10/14/2022	ACH Gmt878	G - Millenia Ministries	15,982.08	Award A485 Mobile Manna/Moving From Surviving to Thriving
	ACH	10/14/2022	ACH Gmt879	G - Sound Parhways	13,460.00	Award 496 Mobile Syringe Service Program Yr2
	ACH	10/14/2022	ACH Gmt880	G - Parent Trust for WA Children	6,250.00	Award A530 Family Wellness Program

Public Hospital District #2 Snohomish County dba Verdant Health Commission  
Electronic Disbursements and Summary October 2022

Type	Date	Num	Name	Amount	Memo
ACH	10/14/2022	ACH Gmt881	G - Parent Trust for WA Children	2,975.00	Award A537 Concious Fathering
ACH	10/14/2022	ACH Gmt882	G - Project Access Northwest	14,583.00	Award A521 Specialty Care for Low-Income Population
ACH	10/14/2022	ACH Gmt883	G - Project Girl Mentoring Prgm	13,138.00	Award A480 - immersion Lab
ACH	10/14/2022	ACH Gmt884	G - Refugee & Immigrant Services NW	8,333.37	Award A486 Refugees and immigrant Navigation
ACH	10/14/2022	ACH Gmt885	G - Snohomish County Legal Services	4,166.66	Award A492 Housing Junstice Program Yr2
ACH	10/14/2022	ACH Gmt886	G - South County Fire	7,431.25	Award 351 Veterans in Prevention
ACH	10/14/2022	ACH Gmt887	G - South County Fire	29,325.00	Award A466 Community Resource Paramedic
ACH	10/14/2022	ACH Gmt888	G - Therapeutic Health Services	26,930.00	Award A515 Integrative Cognitive Therapies Program
ACH	10/14/2022	ACH Gmt889	G - University of WA	11,638.00	Award A512 Mental Health Matters Yr 2
ACH	10/14/2022	ACH Gmt890	G - UTSAV	4,333.00	Award A469 Community Food and Coordination
ACH	10/14/2022	ACH Gmt891	G - Vision Church	22,300.00	Award C-S540 COVID 19 Kits for Relief
ACH	10/14/2022	ACH Gmt892	G - Volunteers of Am Western WA	6,449.09	Award A468 South County CRA 2022
ACH	10/14/2022	ACH Gmt893	G - WA Kids in Transition	10,417.00	Award A514 Low Income Students
ACH	10/14/2022	ACH Gmt894	G - WA Kids in Transition	10,417.00	Award A518 Distribution Center Yr2
ACH	10/14/2022	ACH Gmt895	G - WA West African Center	9,550.00	Award A538 Drop-In Center
ACH	10/14/2022	ACH Gmt896	G - Wonderland Child & Family Svc	12,500.00	Award 347 Early Intervention Program 2020-22
ACH	10/14/2022	ACH Gmt897	G - Wonderland Child & Family Svc	16,250.00	Award A463 Hope Rising Clinic
ACH	10/14/2022	ACH Gmt898	G - YWCA of Seattle, King and Sno Co	2,500.00	Award A488 Emergency Shelter Yr2
ACH	10/14/2022	ACH Gmt899	G - YWCA of Seattle, King and Sno Co	5,220.00	Award A494 Healthcare Access Yr 2
ACH	10/14/2022	ACH Gmt900	G - Girls on the Run	11,000.00	Award A533 Girls on the Run and Heart and Sole
ACH	10/14/2022	ACH Gmt901	G - Jean Kim Foundation	18,550.00	Award A535 Hygene Center Yr 2
ACH	10/14/2022	ACH Gmt902	G - Medical Teams Int'l	11,250.00	Award A534 Care and Connect Yr 2
ACH	10/14/2022	ACH Gmt903	G - Prescription Drug Assistance Found	27,500.00	Award A532 Prescription Drug Assistance Program (Volunteer Pilot)
ACH	10/14/2022	ACH Gmt904	G - Seattle Visiting Nurse Assn	13,000.00	Award C-S541 Uninsured Flu Shot Program
ACH	10/15/2022	ACH Gmt904R	Reverse Seattle Visiting Nurse Assn	-13,000.00	SVA ACH rejected by bank mismatch Award C-S526 Outreach Base Need-replacement from ck 15788 cancelled from Warrant acct
ACH	10/20/2022	ACH Gmt905	G - Hand in Hand	15,000.00	
<b>Subtotal ACH Program Payments</b>				<b>833,630.18</b>	<b>D</b>

**ACH Operating Expense Payments-Operating Account 2709**

ACH	10/03/2022	ACH 828	AmeriFlex Business Solutions	55.62	<b>E</b> Claims
ACH	10/04/2022	ACH 829	Valic	1,771.26	PPE 9/17/22 Employer contrib-
ACH	10/05/2022	ACH 830	Paychex	138.46	PPE 10/01/22
ACH	10/05/2022	ACH 831	Principal Life Insurance Co.	1,707.53	life, AD&D, Short/long term Ins - for Oct 22
ACH	10/05/2022	ACH 832	Paychex	24,281.17	Payroll DD PPE 10/01/22
ACH	10/06/2022	ACH 833	Paychex	167.68	Processing fees
ACH	10/06/2022	ACH 834	Paychex	8,891.87	Payroll Taxes PPE 10/01/22
ACH	10/11/2022	ACH 835	AmeriFlex Business Solutions	157.24	Claims
ACH	10/11/2022	ACH 836	Valic	1,771.26	PPE 10/01/22 Employer Contrib
ACH	10/11/2022	ACH 837	Valic	3,845.14	PPE 10/01/22 Employee deferrals
ACH	10/13/2022	ACH 838	Wells Fargo	70.60	Merchant fee
ACH	10/13/2022	ACH 839	AmeriFlex Business Solutions	23.00	Admin fee

Public Hospital District #2 Snohomish County dba Verdant Health Commission  
Electronic Disbursements and Summary October 2022

Type	Date	Num	Name	Amount	Memo
ACH	10/13/2022	ACH 840	Paychex	40.00	HRS fees
		ACH 841-905	see Grant ACH's		
ACH	10/19/2022	ACH 906	Paychex	138.46	PPE 10/15/22
ACH	10/19/2022	ACH 907	Paychex	30,161.68	Payroll DD PPE 10/15/22
ACH	10/20/2022	ACH 908	Paychex	8,909.34	Payroll Taxes PPE 10/15/22
ACH	10/20/2022	ACH 909	Paychex	118.90	time and attendance fees
ACH	10/20/2022	ACH 910	Paychex	174.95	processing fees
ACH	10/20/2022	ACH 911	Paychex	758.44	2022 3rd Qtr L&I Report
ACH	10/24/2022	ACH 913	AmeriFlex Business Solutions	10.00	Claims
ACH	10/27/2022	ACH 919	AmeriFlex Business Solutions	803.51	Claims
ACH	10/26/2022	ACH 914	Valic	1,771.26	PPE 5/28/22 - Employer Contrib Late
ACH	10/26/2022	ACH 915	Valic	2,356.79	PPE 5/28/22- Employee Contrib Late
ACH	10/26/2022	ACH 916	Valic	3,817.66	PPE 10/15/22- Employee Contrib
ACH	10/26/2022	ACH 917	Valic	1,760.26	PPE 10/15- Employer Contrib
ACH	10/27/2022	ACH 918	WA State Department of Revenue	794.38	B&O tax for Sept 22
<b>Subtotal ACH Operating Acct 2709</b>				<u>94,496.46</u>	E
<b>Electronic Disbursements 2709</b>				<u><b>928,126.64</b></u>	D-E
<b>Warrants All Accounts</b>				<u><b>128,263.47</b></u>	A-C
<b>Total Disbursements</b>				<u><b>1,056,390.11</b></u>	

PUBLIC HOSPITAL DISTRICT #2 OF SNOHOMISH COUNTY  
DBA VERDANT HEALTH COMMISSION  
WARRANT APPROVAL-October 2022

WE, the undersigned Board of Commissioners of Public Hospital District #2 of Snohomish, County, Washington do hereby certify that the merchandise or services hereinafter specified in the supporting schedules referenced A-C have been received and the Warrant Numbers detailed have been issued in the payment amounts as follows:

**Warrants:**

Type	Account	By	Date	#	Total	Reference
Warrants	2717-Warrant		10/01/22-10/31/22	15788 - 15843 & 15850	80,460.80	<b>A</b>
Warrants	7265-Property Management	Verdant	10/01/22-10/31/22	1500-1502	44,271.36	<b>B</b>
		Coast	10/01/22-10/31/22	C1252		
		JSH	10/01/22-10/31/22	J101 - J112		
Warrants	2725-Workers Comp		10/01/22-10/31/22	305539 - 305542	3,531.31	<b>C</b>
				<b>Total Warrants</b>	<b>128,263.47</b>	

These warrants are hereby approved.

Attest:

\_\_\_\_\_  
Riene Simpson-CPA, Director of Finance  
District Auditor

\_\_\_\_\_  
Commissioner

\_\_\_\_\_  
Commissioner

\_\_\_\_\_  
Commissioner

\_\_\_\_\_  
Commissioner

\_\_\_\_\_  
Commissioner

Continued to page 2

PUBLIC HOSPITAL DISTRICT #2 OF SNOHOMISH COUNTY  
DBA VERDANT HEALTH COMMISSION  
WARRANT APPROVAL-OCTOBER 2022, continued

**Summary of Disbursements-Electronic and Warrant:**

<b>Electronic Disbursements 2709</b>	<b>928,126.64</b>	<b>D-E</b>
<b>Warrants All Accounts</b>	<b>128,263.47</b>	<b>A-C</b>
<b>Total Disbursements</b>	<b>1,056,390.11</b>	

End of document