



Building Community Identity

February 21, 2019

Agenda for the Breakout

9:15-9:50	Guest speakers
9:50-9:55	Personal reflection exercise (see page 9 in conference program)
10:00-10:30	Divide into 3 groups for discussion
10:30-10:45	Reconvene for larger group discussion
10:45	Turn in note card with feedback

Guest Speakers

- Cary Simmons, Trust for Public Land
- Christine Stansfield, Sno-Isle Libraries
- Frances Chapin, City of Edmonds, and
Gillian Jones, Edmonds Center for the Arts

Parks, power, & identity



How an immigrant community used
their local park to start a movement

THE
TRUST
FOR
PUBLIC
LAND

The Trust for Public Land

creates parks & protects land for people,

ensuring healthy, livable communities

for generations to come



Case Study: Wenatchee Valley Parks



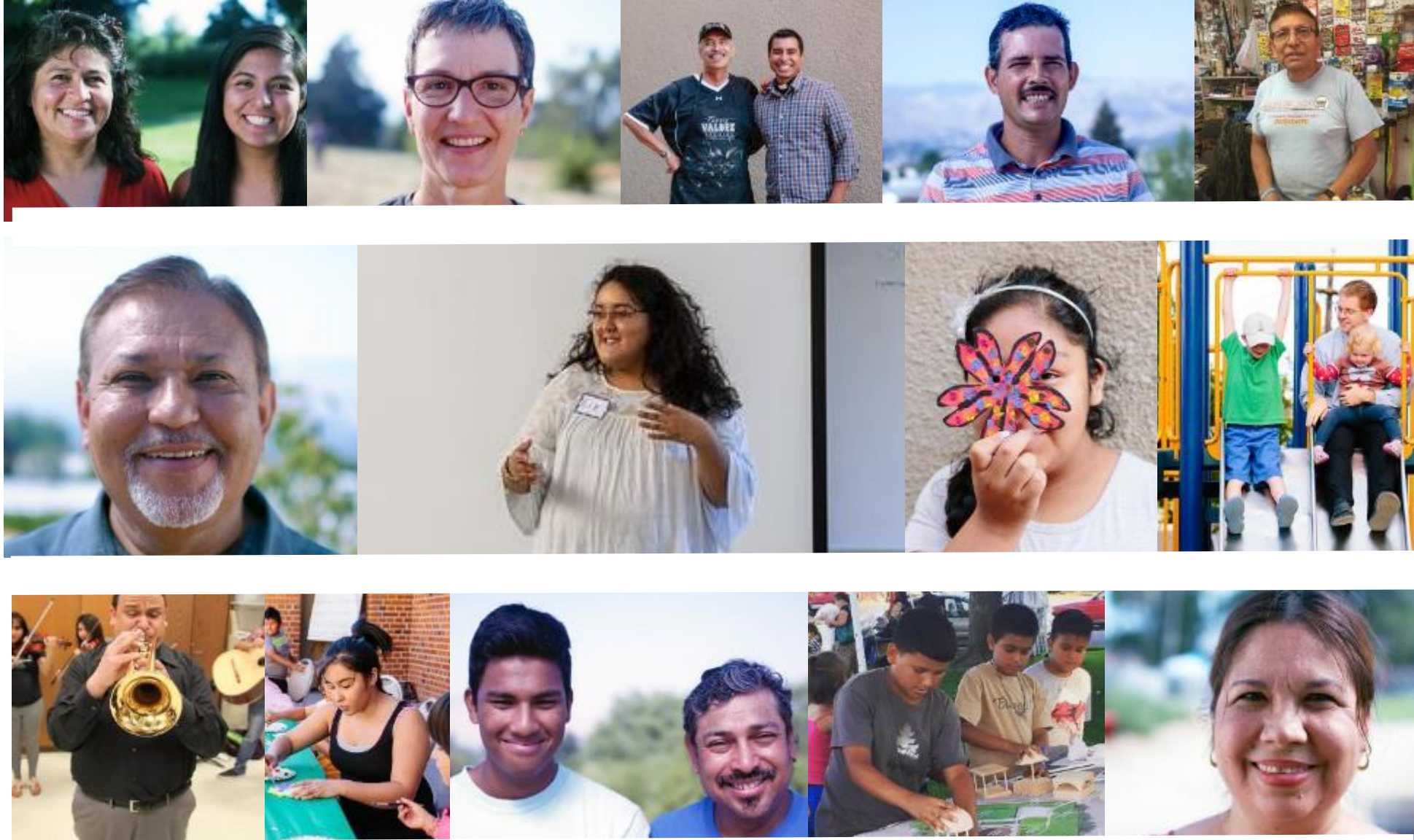
Lesson learned: let the local experts drive

**Neighborhood safety &
opportunities for kids**

**Cultural representation & spaces for
community events**

**Representation in Wenatchee's City
Government**

**Social isolation, depression, and
loneliness**



The Project Team



Parque Padrinos



Folk music & dance



Mural arts



Landscape heritage



Park activation & programming



Park activation & programming



Park activation & programming



- *Improve community health & wellbeing*
- *Promote local arts, traditions, & culture*
- *Create an authentic sense of belonging*
- *Increase leadership & civic participation*

Leveraging the park into the future



A park that's more than a park



MARINER COMMUNITY CAMPUS

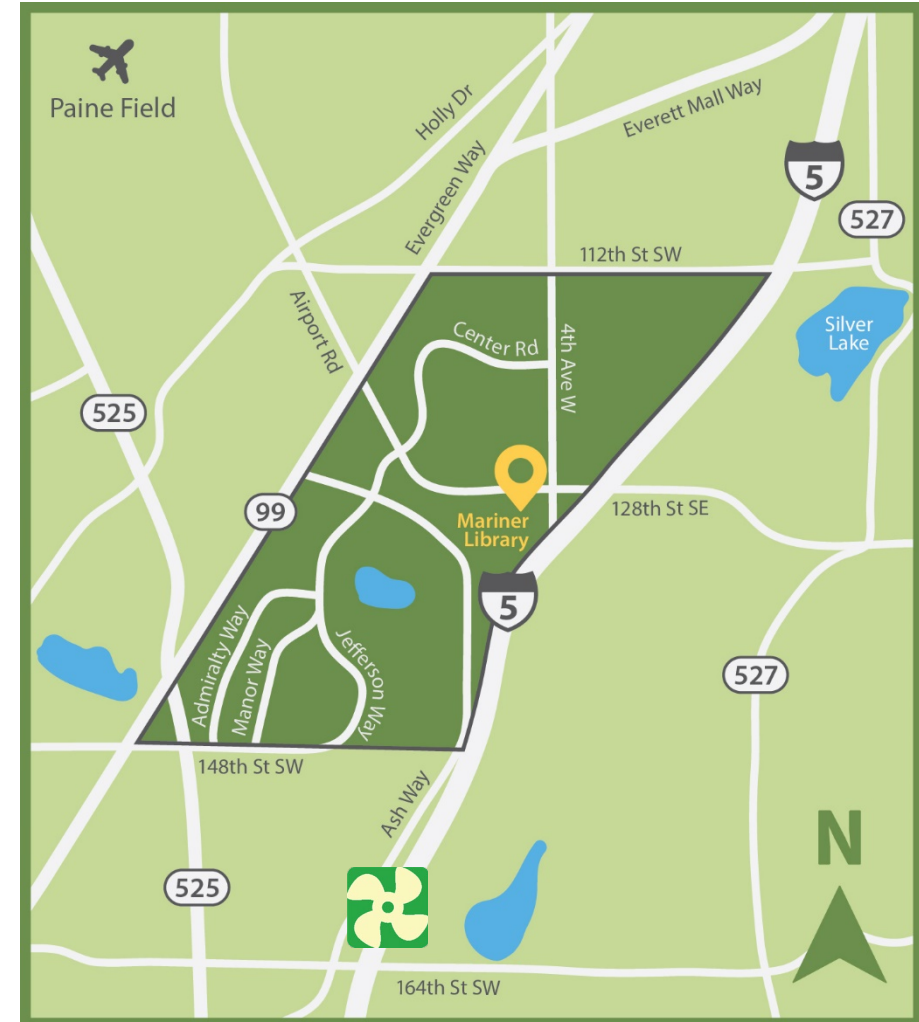
The Library as Community Builder

Christine Stansfield, Sno-Isle Libraries



The Mariner Community

- ❖ More than 25,000 current residents with 23% expected growth in the next 5-10 years.
- ❖ Families, seniors, college students. Racially and economically diverse.
- ❖ Lack of public gathering spaces, shared community identity.
- ❖ Strong desire to build community.



The Vision

To create an accessible Mariner Community Campus to provide basic needs and resources to local residents in the Mariner-area community. The campus would be based on a permanent public-private partnership to:

- ❖ Build a safe and accessible community campus
- ❖ Provide a community benefit meeting the basic needs of all residents
- ❖ Support the Mariner area through integrated and high-quality services and amenities that reinforce healthy families and a strong community



Authentic Community Engagement



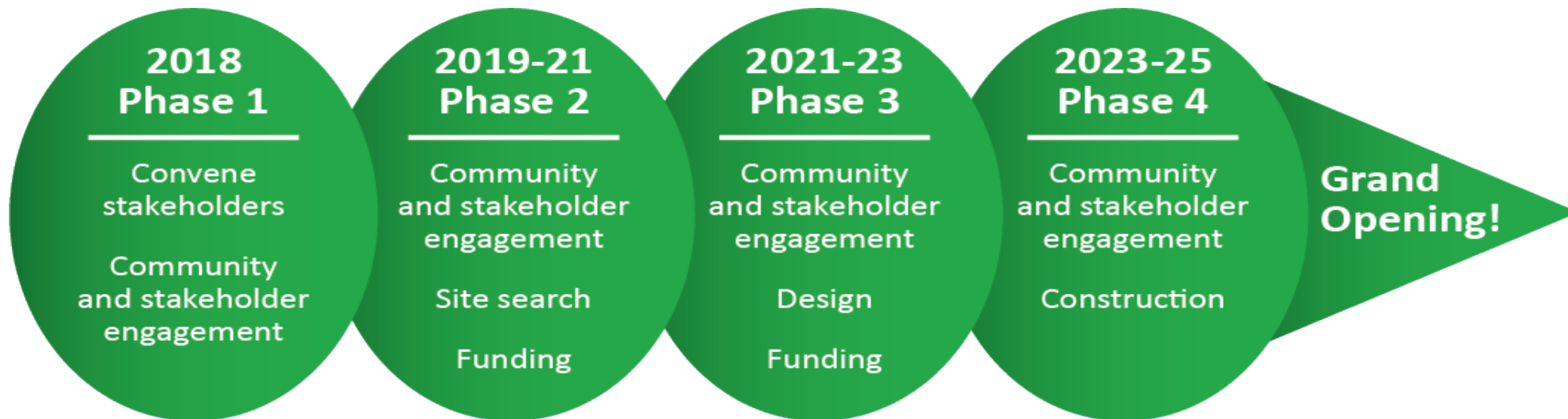
- ❖ Key question: what do you and your family need to thrive?
- ❖ Opportunity to connect community knowledge and wisdom with capital resources.
- ❖ Commitment to listening and building trust.
- ❖ Seeking out and honoring existing leaders and networks.
- ❖ Is the process equitable? How can we do things differently?

Project Partners

Sno-Isle Libraries
United Way Snohomish County
Snohomish Health District
Greater Foundation Snohomish County
Economic Alliance Snohomish County
State of Washington
Mukilteo School District
Community Transit
Everett Community College
Edmonds Community College
Boys and Girls Clubs of Snohomish County
YMCA of Snohomish County
Volunteers of America Western Washington
Snohomish County
WSU- North Puget Sound Everett
Leadership Snohomish County
Snohomish STEM Network
C3 Coalition
Leadership Launch
Casino Road Connect
And more!



Project Timeline





MARINER COMMUNITY CAMPUS

Thank you!

Christine Stansfield

Sno-Isle Libraries

cstansfield@sno-isle.org

360-651-7003



Guest Speakers

Frances Chapin, City of Edmonds

Gillian Jones, Edmonds Center for the
Arts

Sense of Place and Community Identity



Community



Place Making





Public Process/Celebration



Engagement











Thought Provoking





Interaction





Welcoming



AXIS Dance Company's Family Fun Dance Jam



ECA Outreach:

Red Kite, Brown Box



ECA Dementia-Inclusive Series:

Kupuna Ukulele Time



ECA Outreach:

Bilingual storytelling workshop with David Gonzalez



ECA Education Matinee:
Jargie the Science Girl (bilingual version)



Agenda for the Breakout

9:15-9:50

Guest speakers

9:50-9:55

Personal reflection exercise

(see page 9 in conference program)

10:00-10:30

Divide into 3 groups for discussion

10:30-10:45

Reconvene for larger group discussion

10:45

Turn in note card with feedback

Breakout Session Questions

1. We recognize that each organization represented today has a different connection to the topic of social and physical infrastructure. How much do you believe this topic is relevant to your organization or the work your organization does?
2. Strengths: What currently exists in your community supporting health using the physical environment? What are we doing well and what are our strengths? Please tie these ideas to the theme of the session you are attending.
3. Opportunities/Challenges: What local opportunities exist to strengthen the support for health using the physical environment? What weaknesses do we have to overcome? Please connect these ideas to the theme of the session you are attending.
4. What opportunities are you now considering for your organization as a result of today's conversation?

Breakout Session Questions

Introductions (name/organization)

Strengths: What currently exists in your community supporting health using the physical environment? What are we doing well and what are our strengths? Please tie these ideas to the theme of the session you are attending.

Breakout Session Questions

Opportunities/Challenges: What local opportunities exist to strengthen the support for health using the physical environment? What weaknesses do we have to overcome? Please connect these ideas to the theme of the session you are attending.

Breakout Session Questions

What opportunities are you now considering for your organization as a result of today's conversation?

Reconvene for Discussion

What are some of the key takeaways shared within your smaller group?

Next Up

Please turn in your response cards

10:45-10:55

Break w/snacks upstairs in 2E

10:55-11:30

Closing Remarks & Community Award
(Eric Klinenberg Book Raffle)