

# VERDANT CARES VERDANT CARES



HEALTH COMMISSION  
SERVING SOUTH SNOHOMISH COUNTY

## 2022 COMMUNITY IMPACT REPORT



HEALTH COMMISSION  
SERVING SOUTH SNOHOMISH COUNTY

## Who We Are

Verdant is a program of Public Hospital District No. 2, Snohomish County, and our Board of Commissioners and employees make up the team who administer the grants, classes, and services available to residents. The voter-elected Board of Commissioners includes 5 members who govern the organization, and the staff includes 8 full-time and 3 part-time employees. Verdant oversees the lease of our hospital to Providence/Swedish Edmonds, the Kruger Clinic and the Verdant Community Wellness Center.

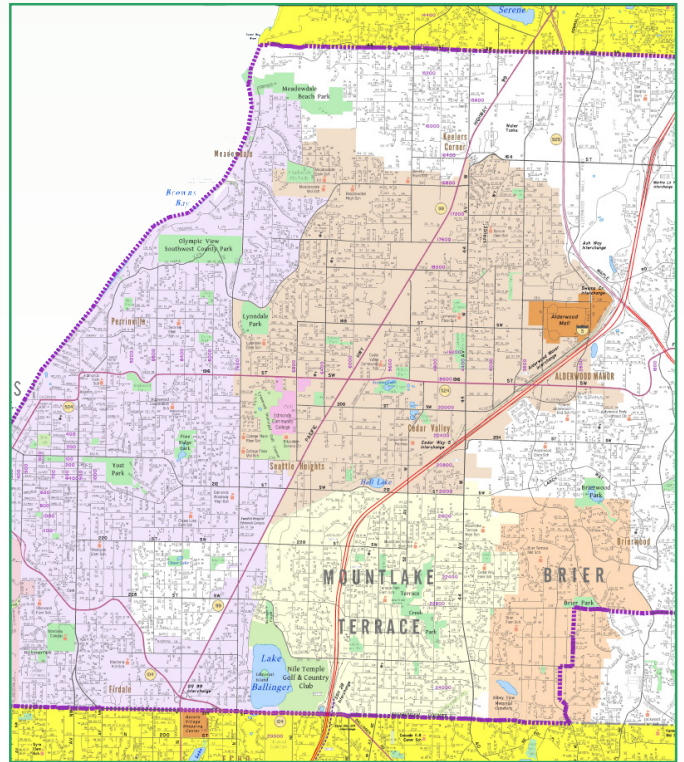
## Our Mission

To improve the health and well-being of our whole community.

## Our Vision

To be a sustaining public resource improving the health and well-being of South Snohomish County, collaboratively and creatively working to meet the needs of our whole community.

## Our Service Area



Verdant supports the residents of Lynnwood, Edmonds, Woodway, Mountlake Terrace, Brier and portions of Bothell and unincorporated Snohomish County.



**Providence/Swedish Edmonds**

21601 76th Ave W.  
Edmonds, WA 98026



**Kruger Clinic**

21600 Hwy 99  
Edmonds, WA 98026



**Verdant Wellness Center**

4710 196th St SW.  
Lynnwood, WA 98036



# Greetings from Verdant



At the heart of the Verdant Health Commission is a dynamic board of commissioners and a dedicated team of community focused professionals with a shared mission: Healthcare services and support for the whole community. This report highlights how, together, we are emerging from the COVID pandemic and focusing our energies and resources to the health and wellness challenges of our community. In 2022, Verdant invested more than \$9.4 million in community health programs and services at free or reduced cost for residents with limited or no health insurance. This investment was an increase from pre-pandemic funding in the community. Also in 2022, Commissioners refined the scope of Verdant's work and narrowed funding areas from 9 to 3 strategic priorities. In this report, we highlight partners advancing our top priorities: Mental Health, Healthcare Access and Food Security. As a community-owned public hospital district, we believe that it is important to report back to the community regarding the progress that has been made. Verdant provides \$3.50 to the community for every \$1 in public funds received. On the following pages, you will find stories that highlight our work with partner organizations.

Wishing you good health,

James S. Distelhorst, MD, **Board President**  
Lisa Edwards, EdD, **Superintendent**

#VERDANTCARES

## Board of Commissioners



Jim Distelhorst, MD,  
**President**  
2022-2027



Karianna Wilson  
**Secretary**  
2018-2023



Bob Knowles  
**Member**  
2020-2025



Carolyn Brennan  
**Member**  
2022-2027



Deana Knutsen  
**Member**  
2018-2023

# 2022 Community Investments

Partner	Investment
American Heart Association	\$40,199
Boys and Girls Club of Sno. Cty	\$75,000
Cancer Lifeline	\$17,150
Cascade Bicycle Club	\$50,000
Cascade Swim Club	\$5,300
Center for Human Services	\$523,106
ChildStrive	\$647,780
City of Edmonds	\$107,750
City of Lynnwood	\$59,220
City of Mountlake Terrace	\$2,480
Cocoon House	\$101,250
Communities of Color Coalition	\$1,000
Community Foundation of Sno. Cty	\$25,000
Community Health Center of Sno. Cty	\$40,000
Compass Health	\$436,836
Concern for Neighbors Foodbank	\$7,500
Domestic Violence Services of Sno. Cty	\$191,000
Edmonds College Foundation	\$255,585
Edmonds Food Bank	\$29,925
Edmonds School District	\$1,330,081
Edmonds Waterfront Center	\$116,000
Evergreen Recovery Center	\$177,200
Foundation for Edmonds Schools	\$57,500
Girls on The Run	\$32,090
Hand In Hand	\$15,000
Helping Hands Project	\$118,118
Homage	\$473,246
Interfaith Family Shelter	\$9,996
Jean Kim Foundation	\$241,625
Kindering	\$168,750

Partner	Investment
Korean Community Service Center	\$113,125
Korean Women's Association	\$124,659
Latino Educational Training Institute	\$184,803
Lynnwood Foodbank	\$52,000
Medical Teams International	\$158,570
Millenia Ministries	\$181,195
Pacific Treatment Alternatives	\$156,542
Parent Trust for Washington Children	\$25,150
Prescription Drug Assistance Foundation	\$68,750
Project Access Northwest	\$174,998
Project Girl	\$158,660
Refugee Immigrant Services Northwest	\$81,500
Seattle Visiting Nurses	\$49,840
Snohomish County Legal Services	\$50,000
South County Fire	\$353,100
Support 7	\$20,000
The Hand Up Project	\$73,096
Therapeutic Health Services	\$254,655
University of Washington, Bothell	\$115,036
UTSAV	\$55,000
Vision Church	\$22,300
Volunteers of America	\$77,389
WAGRO	\$20,000
Washington Kids in Transition	\$187,504
Washington West African Center	\$115,600
Wonderland Child & Family Services	\$345,000
YMCA of Greater Seattle	\$69,975
YWCA of King & Snohomish Counties	\$23,161
YWCA Seattle, King, Sno. Counties	\$69,480

“Collaborations such as the one that Verdant Health Commission has been a part of have been essential to the expansion and success of Project Girl Mentoring in recent years. We have been able to keep our organization going strong while also making significant headway in addressing the mental health needs of young women of color; which has allowed us to better serve the community as a whole.”

- Olympia Edwards, CEO of Project Girl Mentoring Program

# 2022 Impact



**3,693**

Community members served in classes & trainings



**68**

Cooking demos & cook alongs



**100**

Participants attended Community Networking event



**195**

Community members received Narcan training



**300**

Community members attended National Night Out



**62**

Funded Partners

[#VERDANTCARES](#)

## South Snohomish County Profile

**244,891**



Population

**38**



Median Age

**\$99,727**



Average Income

### Race

Black or African American 3%

Indigenous/ people of color 9%

Asian 15%

White 73%

# Verdant Partner Highlights



The Project Girl Mentoring Program seeks to support the advancement of young women of color, help them to make positive life choices, and empower them to maximize their authentic potential. The organization is led by Olympia Edwards and takes a positive, non-judgmental approach to mentoring. By working with participants one-on-one and in group settings, Project Girl helps young women gain the coping skills necessary to be successful in school, at home, and in their personal lives. Participants also have the opportunity to engage in peer-based mentorship, a program design which allows youth to learn from one another and grow together. Last year, Project Girl served over 140 girls who had encountered the juvenile justice system as a diversion program.



Since 2016, Compass Health's Community Transitions Program has partnered with South County Fire's Community Paramedic Program to connect individuals with the resources they need. By increasing community access to mental and physical healthcare, shelter and housing, food, and transportation, the Community Transition program reduces calls to 911, minimizes visits to the emergency room, and decreases unnecessary utilization of inpatient services. Community Transitions serves some of Snohomish County's most marginalized residents, including those experiencing poverty, homelessness, substance use issues, and/or mental health concerns. In 2022, Community Transitions diverted 100 individuals away from emergency services and, instead, provided compassionate care coordination and facilitated more than 70 referrals to more sustainable resources.



Lahai Health was founded in 2003 through the shared vision of a small group of healthcare providers. Today, the organization is Puget Sound's largest primary care clinic specifically focused on serving low-income community members. Lahai's professional, compassionate staff provide integrated medical, dental, and mental healthcare to underserved individuals and families—all of which can be accessed for free or at a reduced rate. Lahai's mental health counseling program has grown rapidly and, today, serves three times as many patients as it did in year one. In 2022, Lahai Health directly served more than 120 individuals across all programs and facilitated referrals to outside counseling services for 2,000 additional clients.

# Mental Health · Healthcare Access · Food Security



Center for Human Services

*Building a stronger community...one family at a time.*

Washington State is in the midst of a youth mental health crisis and currently faces a severe shortage of counselors. However, organizations such as the Center for Human Services (CHS) are working to ensure students in our region can access the mental health supports they need. Today, CHS provides school-based counseling services at 14 schools in the Edmonds School District, engaging students on campus to reduce barriers related to transportation, time away from school/work, lack of healthcare insurance, and more. CHS is able to provide rapid response to students in need, typically scheduling the first appointment within three days of a school's referral. In 2022, 445 Edmonds School District students received mental health counseling through this CHS program.



Since 2005, Millennia Ministries has been working to support our community's unhoused neighbors by providing advocacy, housing, and programs that reduce barriers to accessing nutritious food. The organization was founded by members of the Black community and works to empower BIPOC individuals, single parent families, immigrants, and others. With the support of Verdant Health, Millennia has expanded its Mobile Millennia grocery delivery program to reach more residents living in richly diverse areas of Lynnwood, Edmonds, and Mountlake Terrace. This program distributes healthy food options to families, the elderly, and anyone with barriers to accessing groceries. In 2022, Millennia Ministries served more than 5,200 households.



EDMONDS FOOD BANK  
PEELING BACK THE LAYERS OF FOOD INSECURITY

Edmonds Food Bank (EFB) is committed to ensuring that every member of our community has access to healthy, culturally appropriate foods. In 2022, EFB leveraged Verdant funding to partner with the Latino Educational Training Institute (LETI), the Korean Community Service Center (KCSC). These partnerships allowed EFB to provide pop-up food banks at partner locations, expanding the number of food distribution sites for Latinx, Korean, Ukrainian, and West African families. Last year, the number of community members reached at both the LETI and KCSC grew by 50 families per month at LETI and KCSC growing by 125 families per month. These sites provided culturally-specific foods as well as cooking instruction and nutritional information. Together in 2022, LETI, KCSC, and EFB served 7,000 families, breaking down barriers related to transportation, and languages spoken.



# .Health .Wellbeing .Education



[www.verdanthealth.org](http://www.verdanthealth.org)

